

# Streamflow Conditions in the Arkansas River Basin WY 2021

In cooperation  
with the  
Arkansas River Compact  
Administration

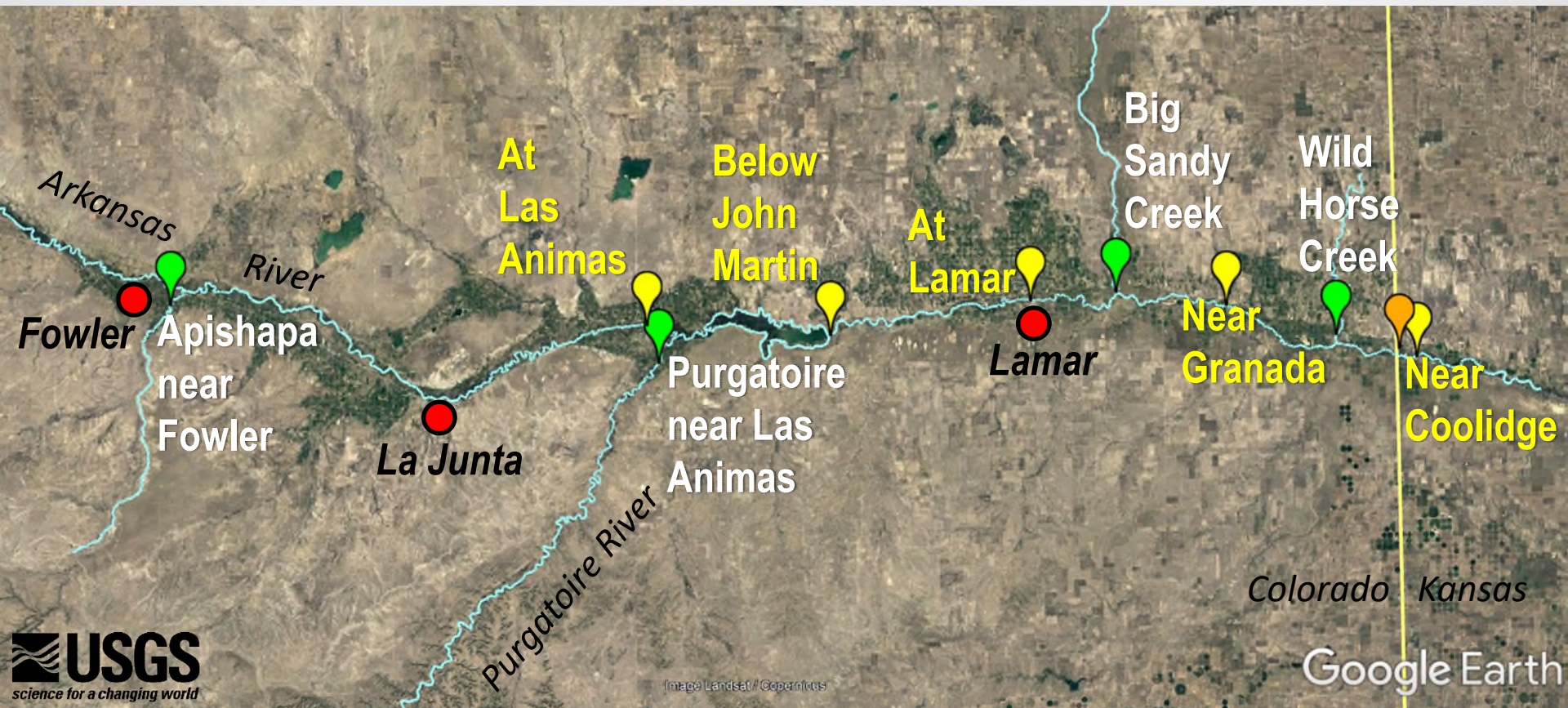
Dustin Ethredge  
ethredge@usgs.gov  
USGS Colorado Water Science Center  
December 9, 2021



# USGS/ARCA Cooperative Program 2021

## 10 streamgages; Fowler, CO – Coolidge, KS

-  5 Mainstem Arkansas sites
-  Frontier Ditch near Coolidge
-  4 Tributaries



# WY 2021 streamflow conditions

*WY 2021 (Oct 1, 2020 – Sept 30, 2021)*

## Hydrographs for 6 sites

- 2 sites upstream of JMR
- 4 sites downstream of JMR

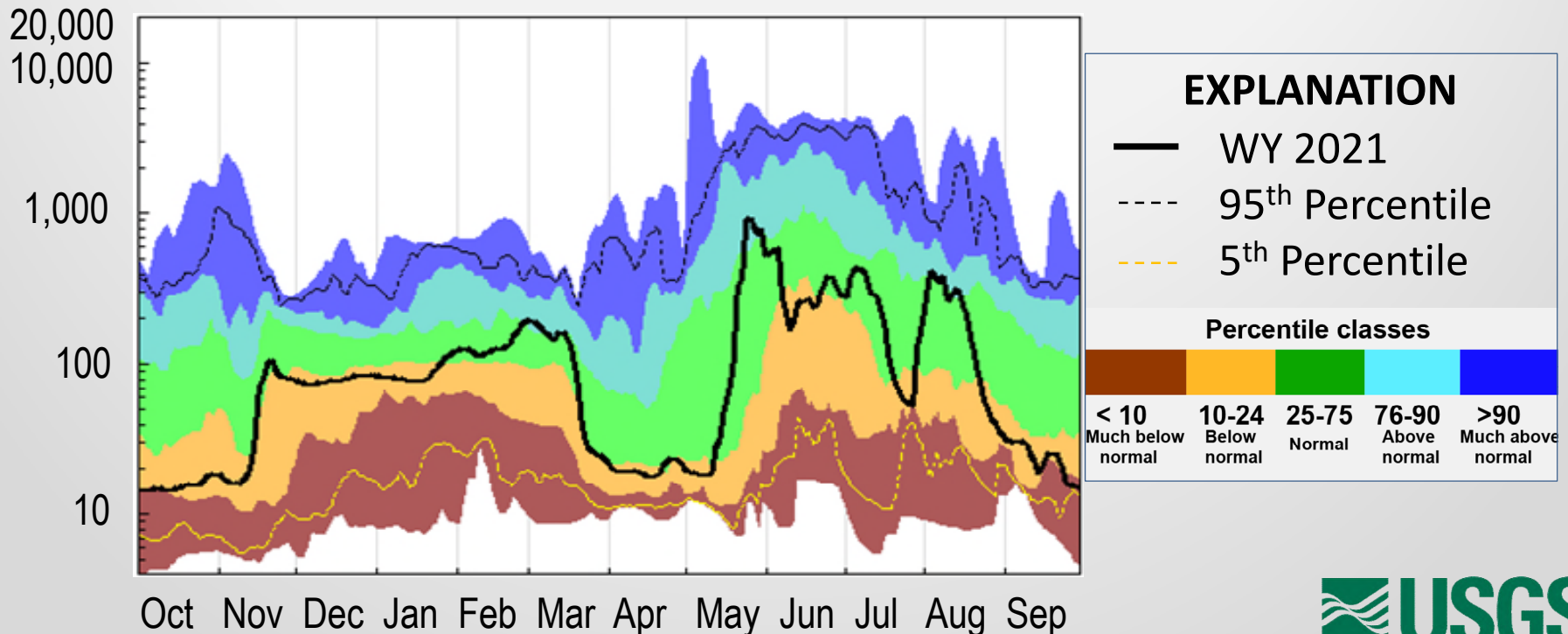


# WY 2021 streamflow conditions

## *Arkansas River at Las Animas*

93,970 Acre-Feet, 49% of average

*7-day average flow,  
cubic feet per second*

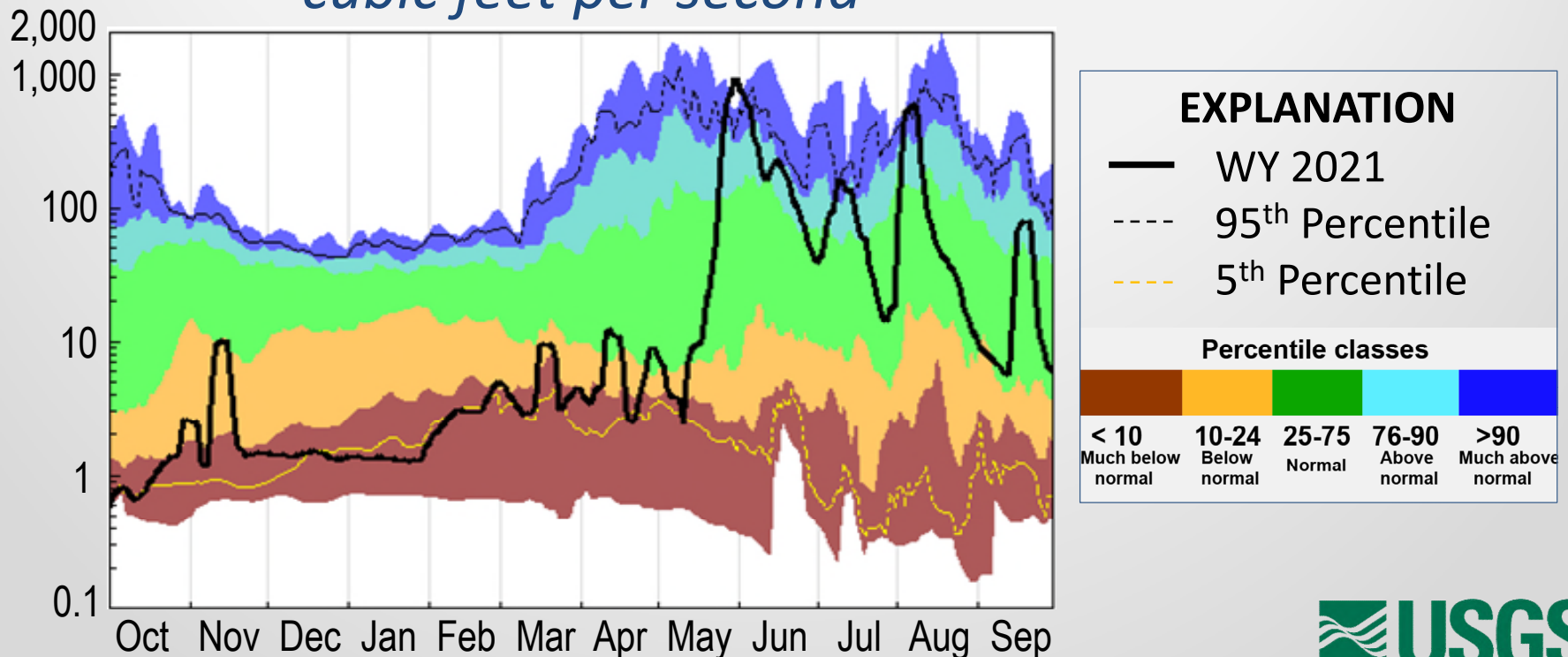


# WY 2021 streamflow conditions

## *Purgatoire River near Las Animas*

41,770 Acre-Feet, 98% of average

*7-day average flow,  
cubic feet per second*

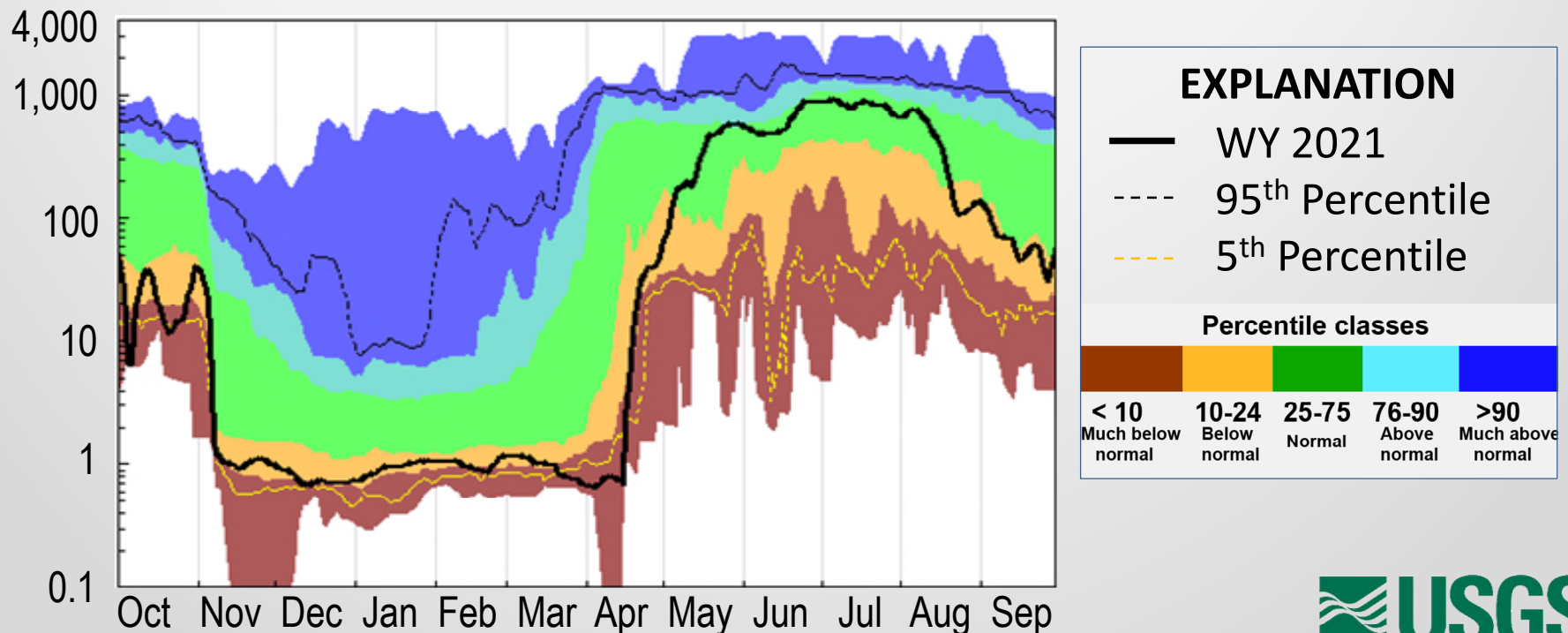


# WY 2021 streamflow conditions

## Arkansas River below John Martin Reservoir

143,400 Acre-Feet, 71% of average

*7-day average flow,  
cubic feet per second*

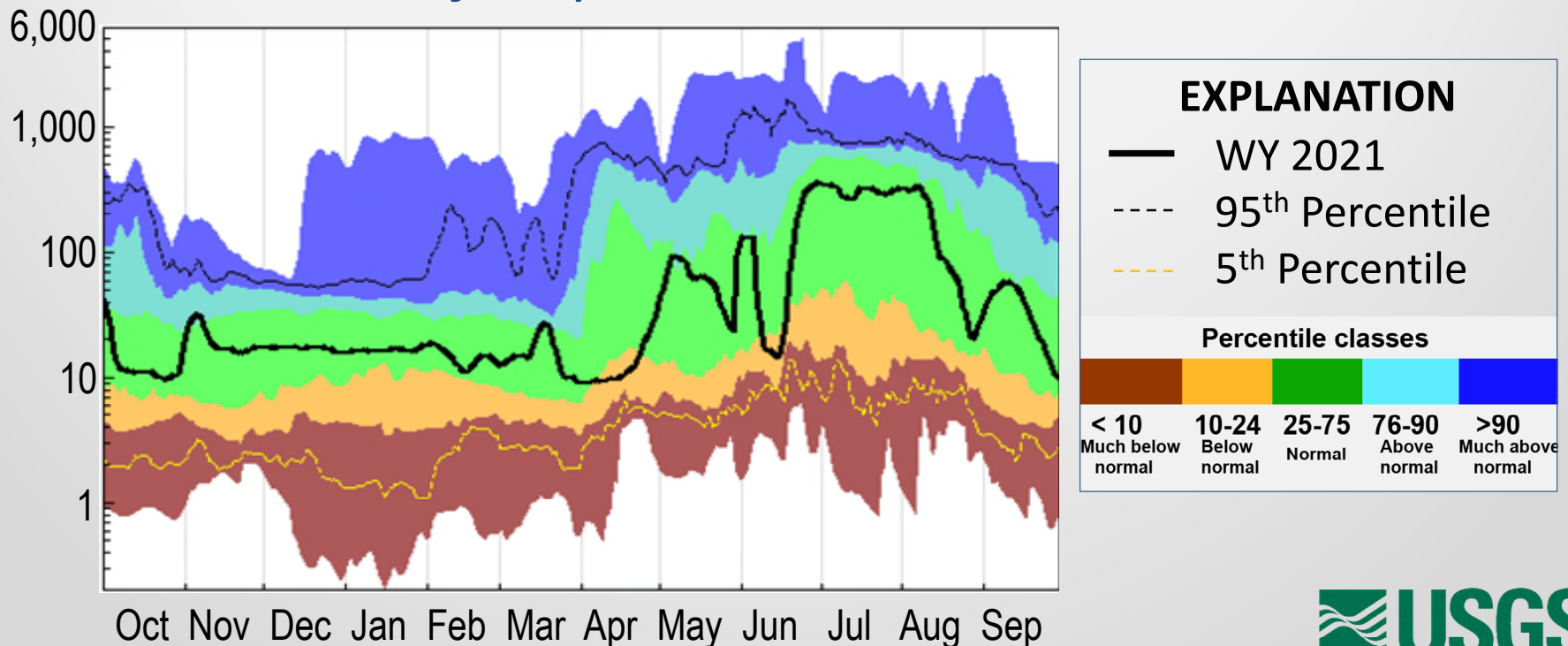


# WY 2021 streamflow conditions

## *Arkansas River at Lamar*

49,090 Acre-Feet, 61% of average

*7-day average flow,  
cubic feet per second*

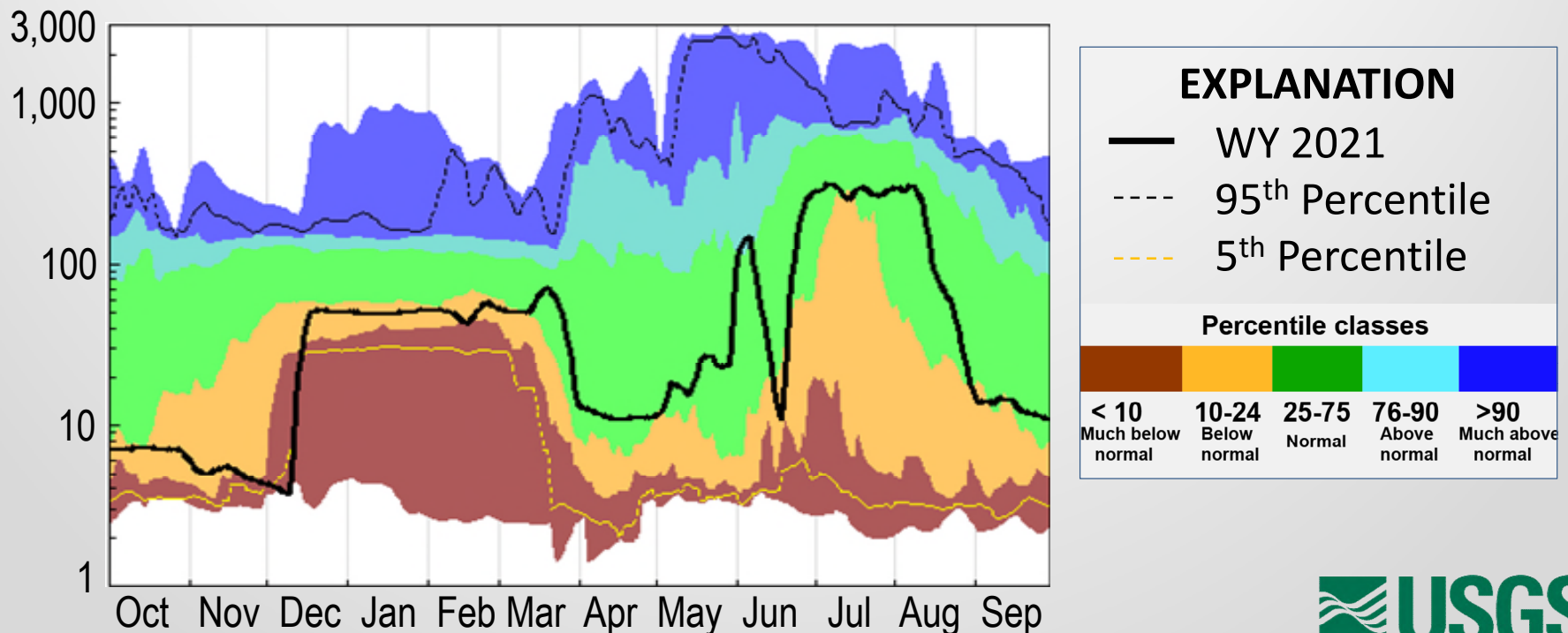


# WY 2021 streamflow conditions

## *Arkansas River near Granada*

47,570 Acre-Feet, 41% of average

*7-day average flow,  
cubic feet per second*



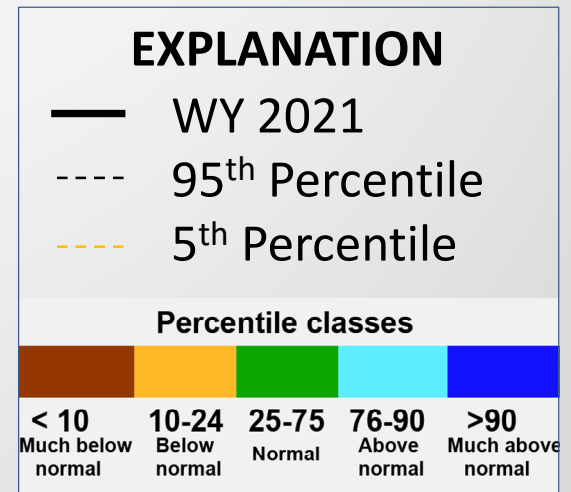
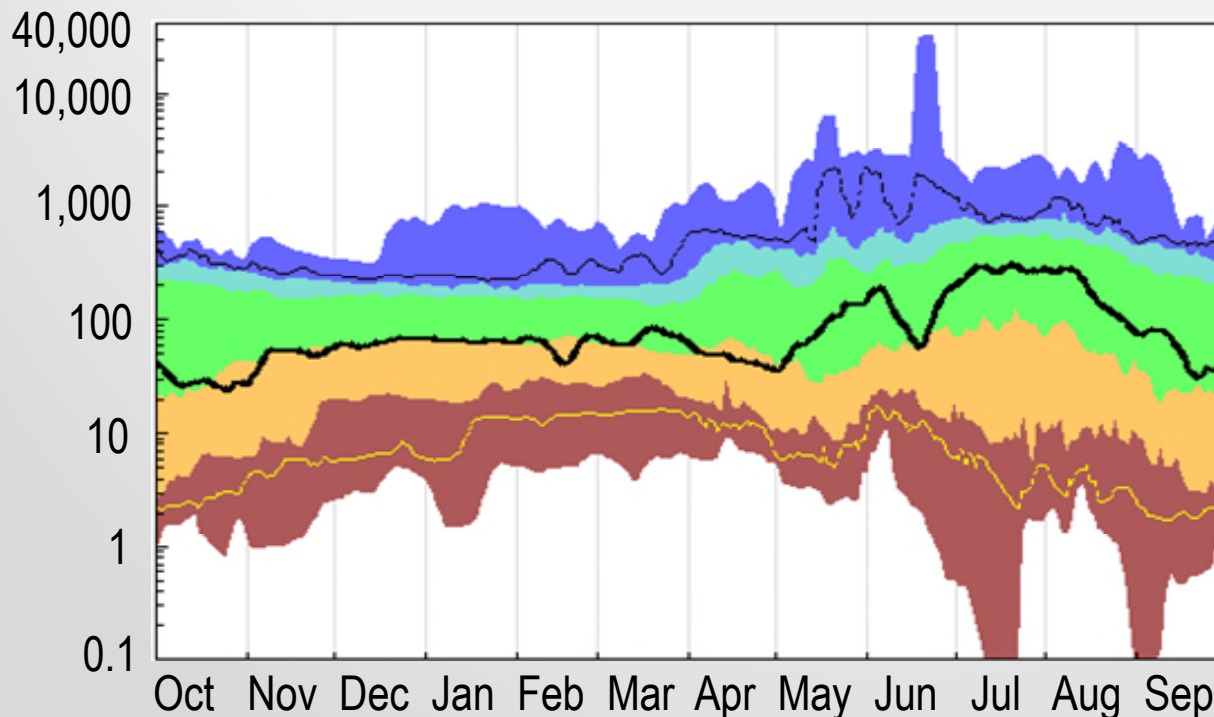


# WY 2021 streamflow conditions

## *Arkansas River near Coolidge, KS*

67,840 Acre-Feet, 47% of average

*7-day average flow,  
cubic feet per second*



# WY 2021 streamflow conditions

Station	WY21 Annual Flow, in ac-ft	Percent of Average
Apishapa River near Fowler	10,140	60%
Big Sandy Creek near Lamar	2,900	29%
Wildhorse Cr. above Holly (Oct, Apr-Sept)	2,130	61%
Frontier Ditch near Coolidge	5,000	59%

# Summary

- WY21 streamflow for the two major inflows to JMR was 49% of average in the Arkansas River at Las Animas and 98% in the Purgatoire River
- WY21 total annual flow was only higher than WY20 flows at two sites (Apishapa and Purgatoire nr Las Animas)
- Downstream of JMR, mainstem flow at 4 sites ranged from 41% to 71% of average, and was 47% of average at Coolidge, KS

