



— BUREAU OF —  
RECLAMATION

# Arkansas River Compact Administration Meeting

2021 Report

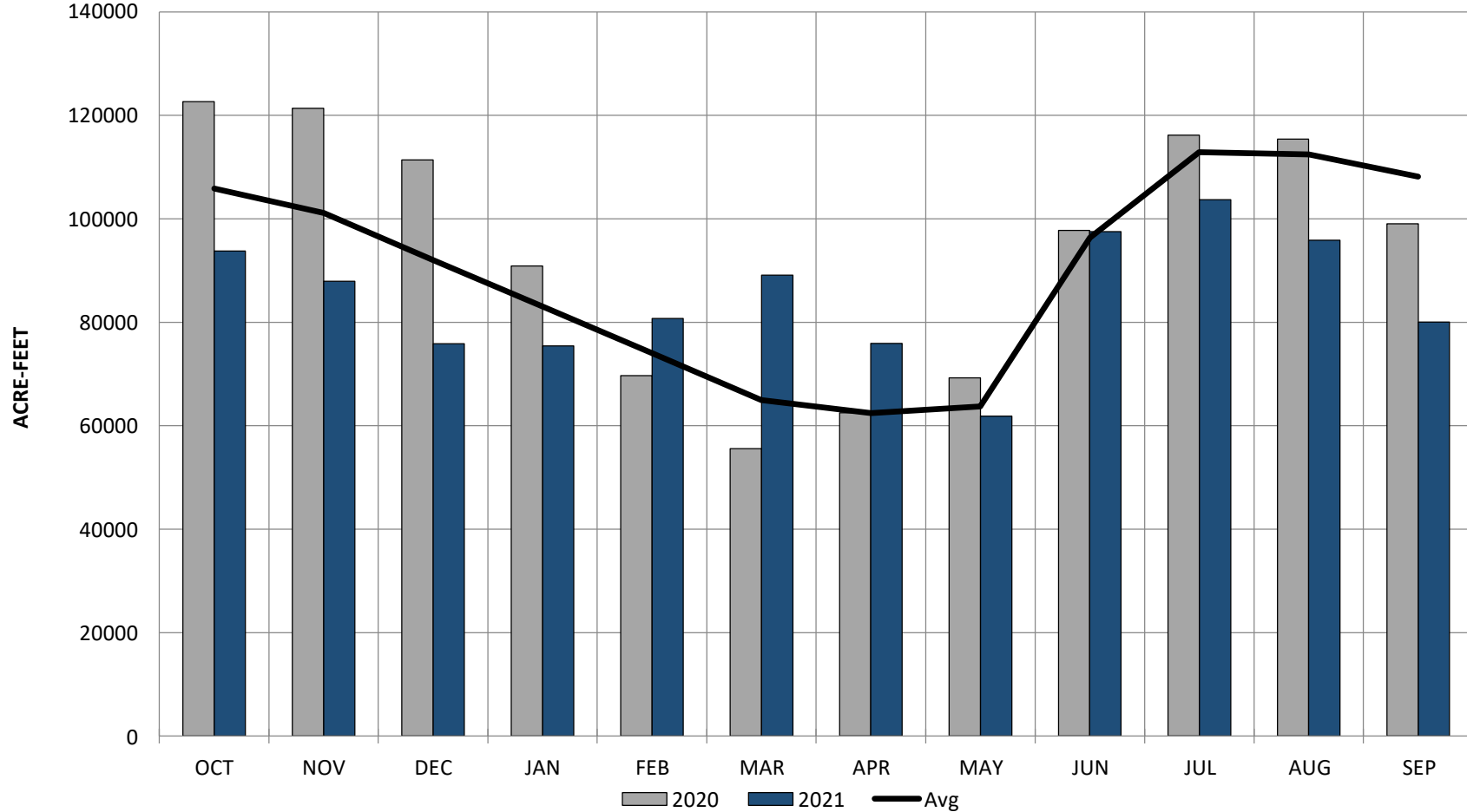
Mike Holmberg  
*Civil Engineer/Hydrologist*  
*Pueblo Dam*

# Fry-Ark Project 2021 Water Year

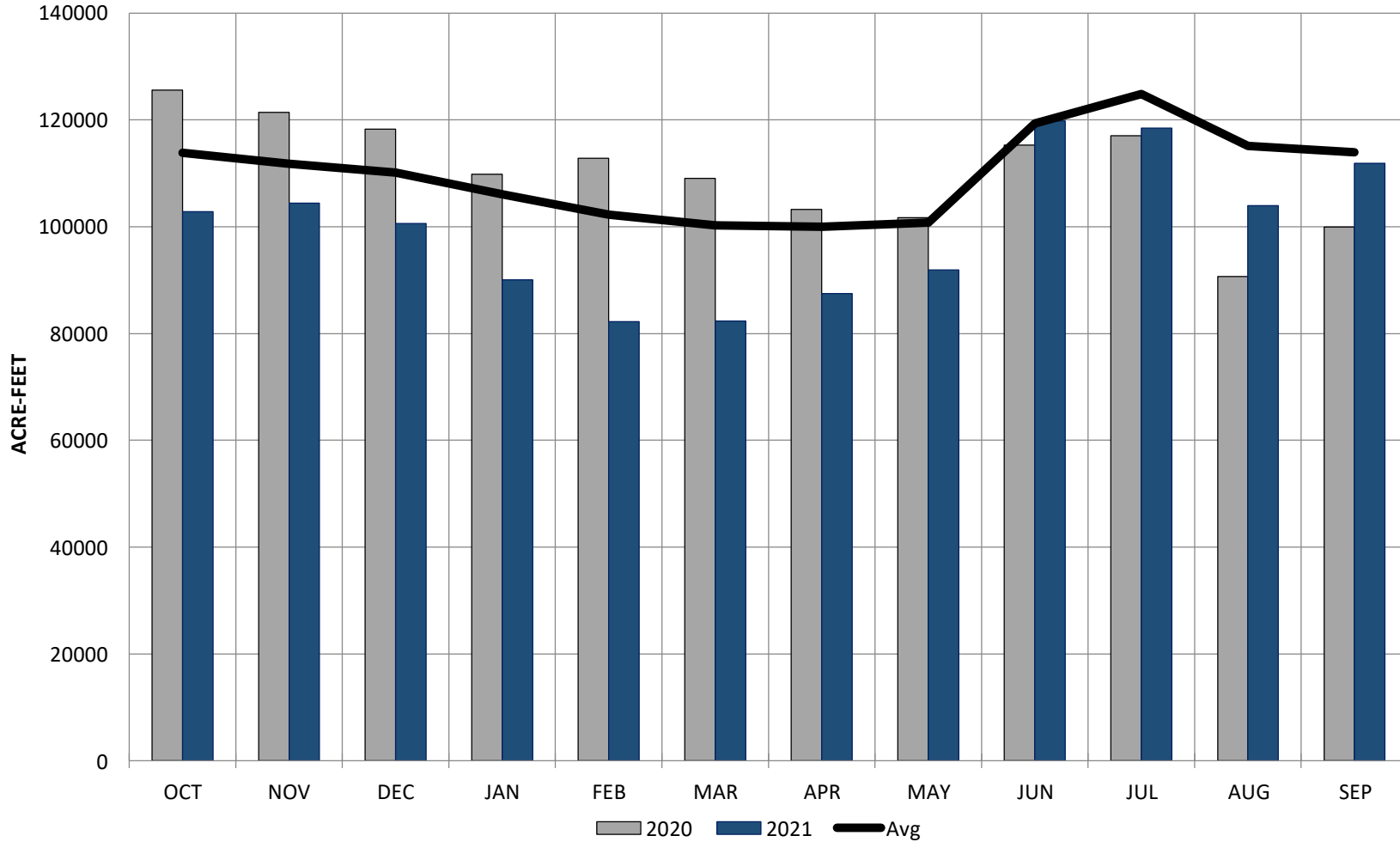
- Imports were well below average
- Snowpack in the Arkansas Basin peaked about average, but peaked weeks earlier than average
- Snowpack in the Colorado Basin started off near average, but dropped off in early December and peaked well below average
- The collection system opened April 20. Runoff peaked in June and finished by mid-July.



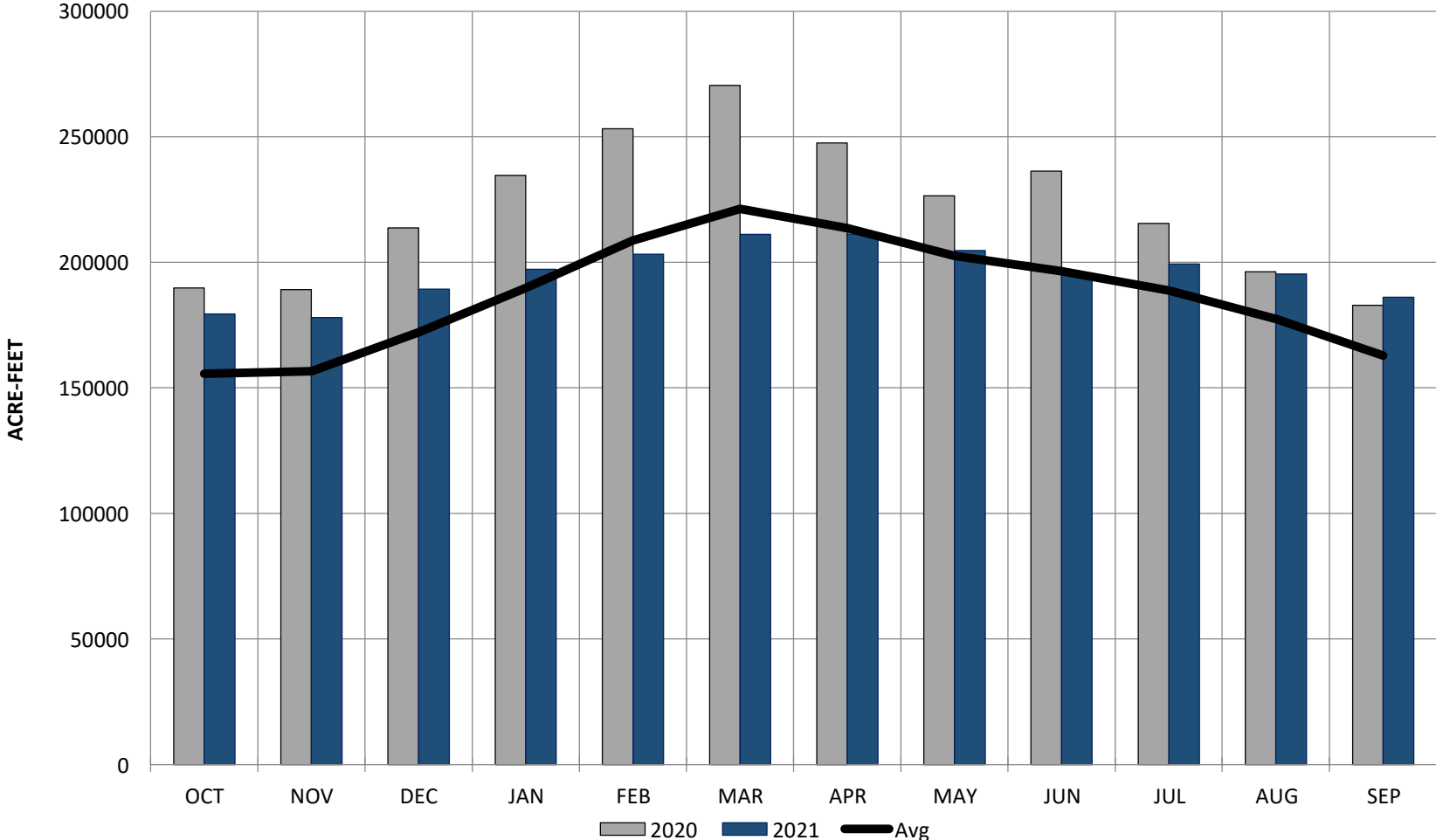
# TURQUOISE LAKE



# TWIN LAKES



# PUEBLO RESERVOIR

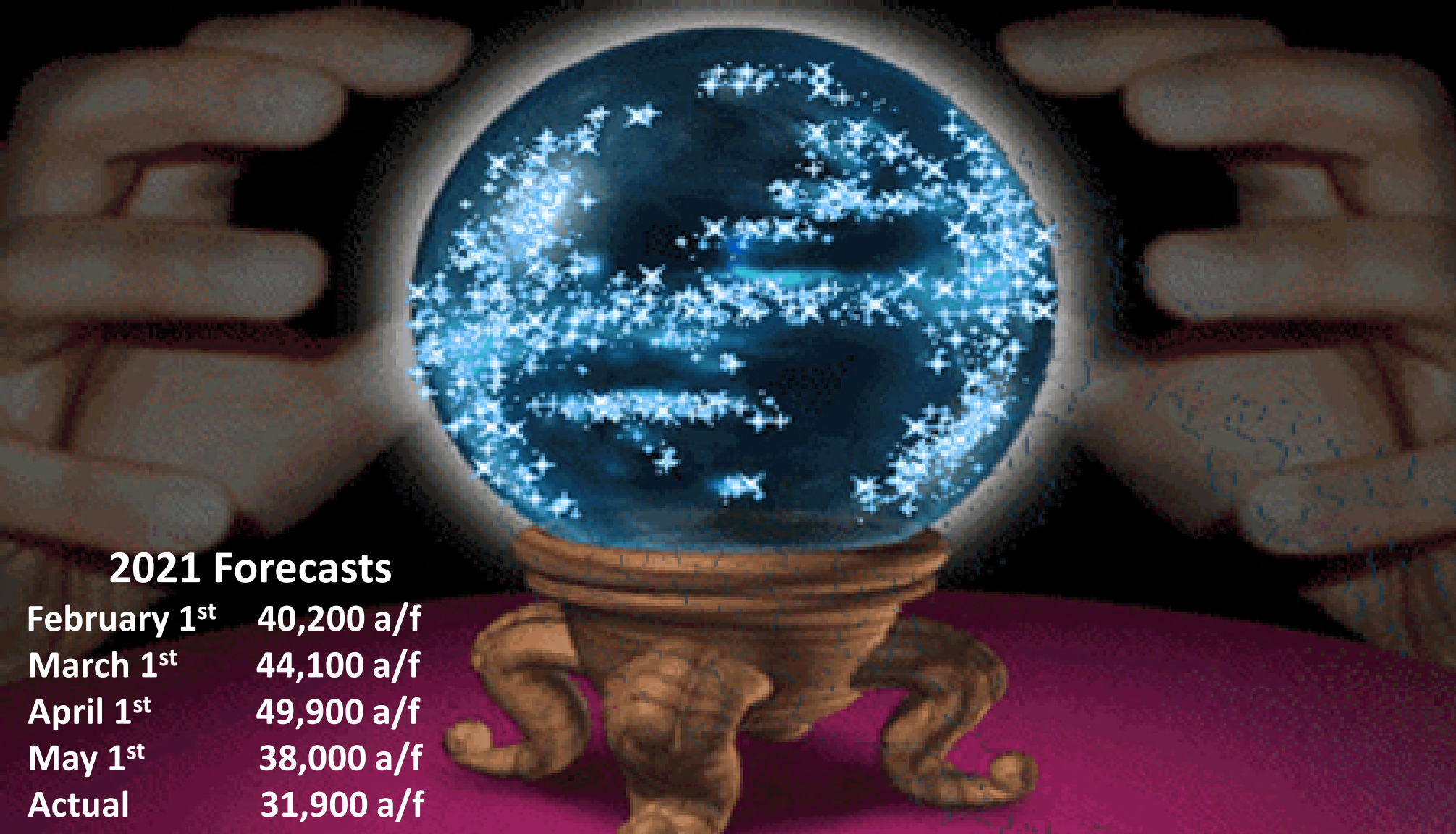


**As of November 30, 2021**

**Project Reservoirs**

<b>Turquoise</b>	<b>81% of Average</b>
<b>Twin Lakes</b>	<b>98% of Average</b>
<b>Pueblo</b>	<b>109% of Average</b>



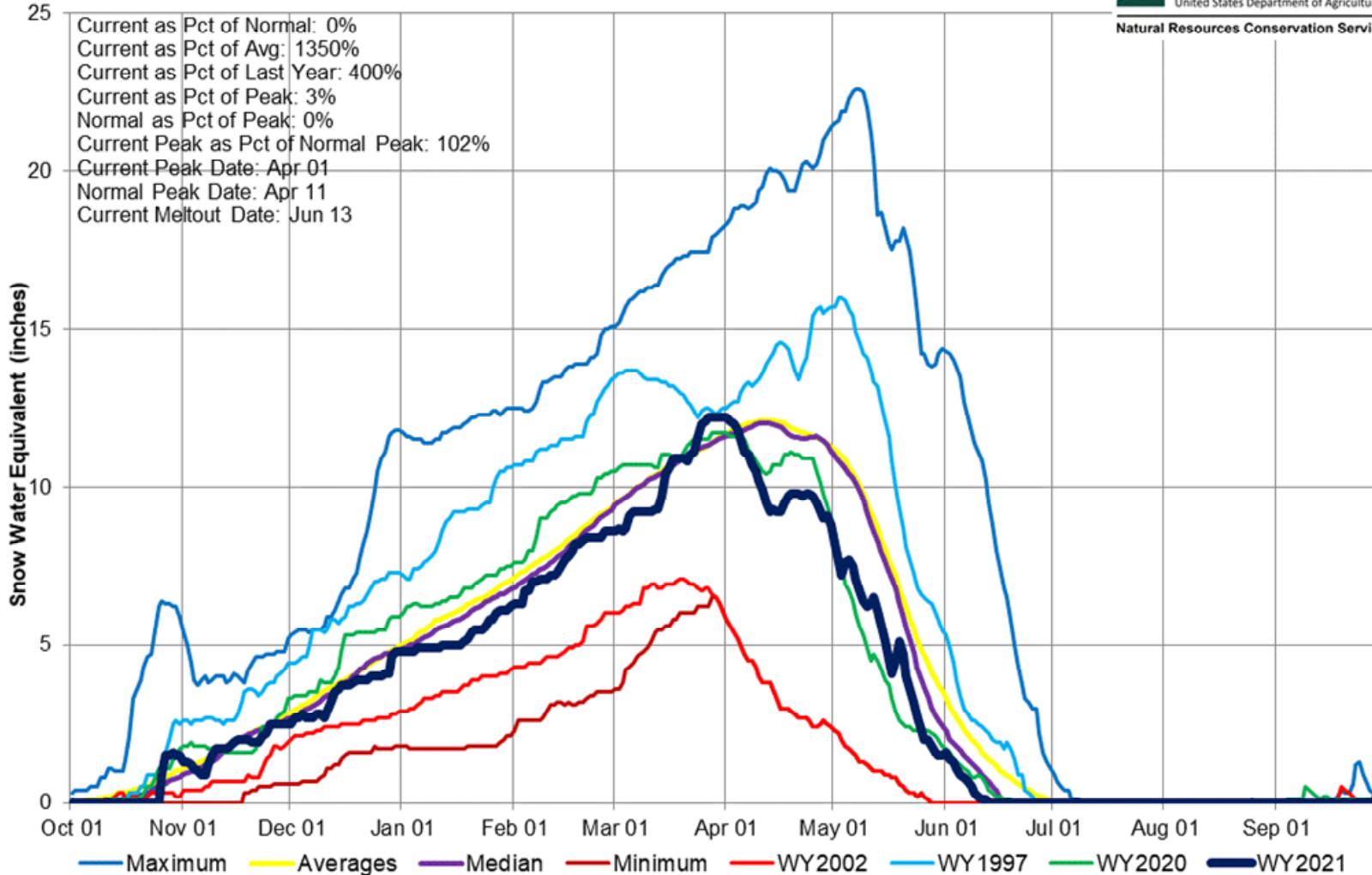


## 2021 Forecasts

February 1 <sup>st</sup>	40,200 a/f
March 1 <sup>st</sup>	44,100 a/f
April 1 <sup>st</sup>	49,900 a/f
May 1 <sup>st</sup>	38,000 a/f
Actual	31,900 a/f

# Arkansas River Basin High/Low Snowpack Summary

Based on Provisional SNOTEL data as of Sep 30, 2021

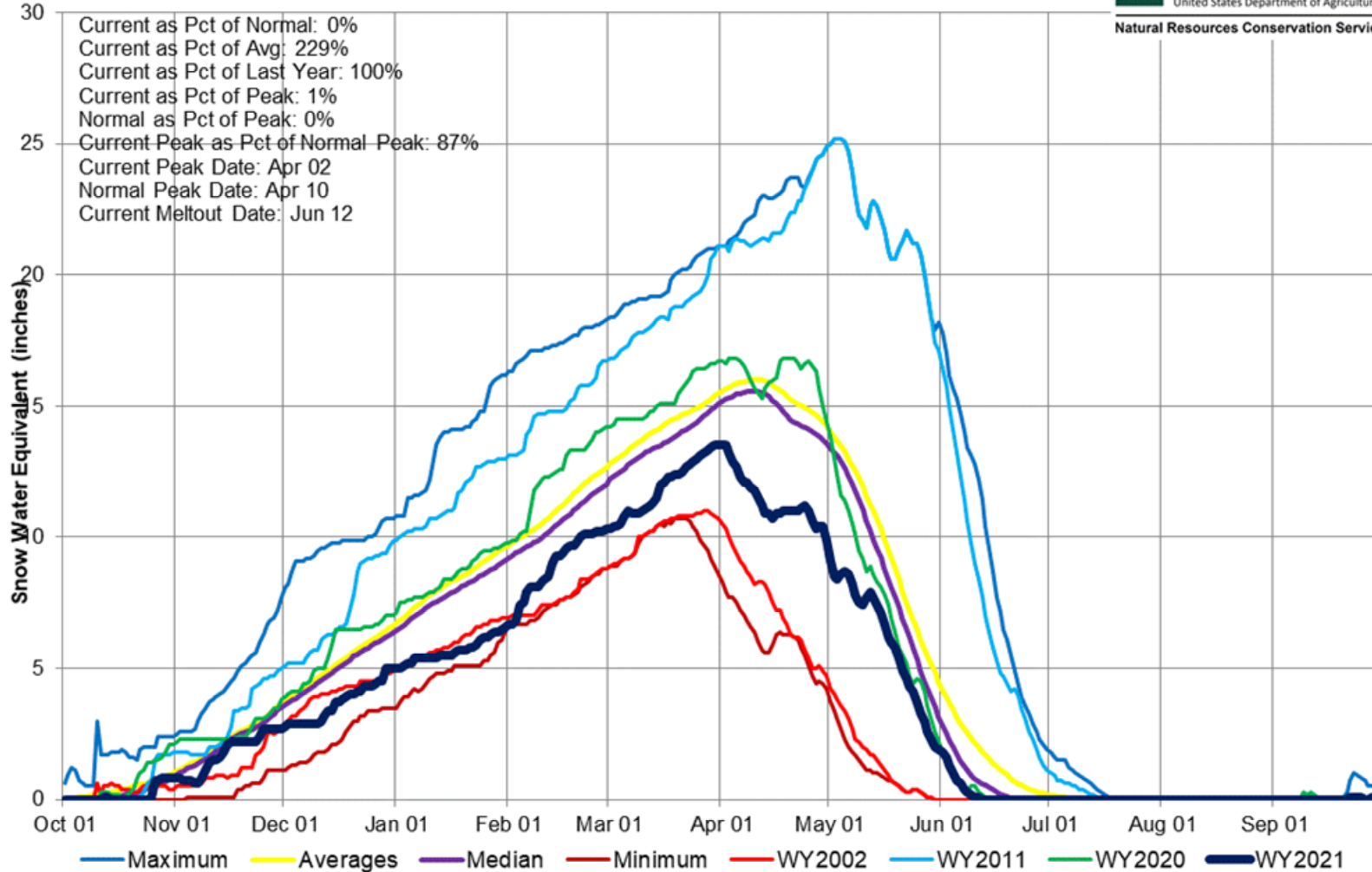




# Upper Colorado River Basin High/Low Snowpack Summary

Based on Provisional SNOTEL data as of Sep 30, 2021

USDA  
United States Department of Agriculture  
Natural Resources Conservation Service



# Arkansas River Basin Time Series Snowpack Summary

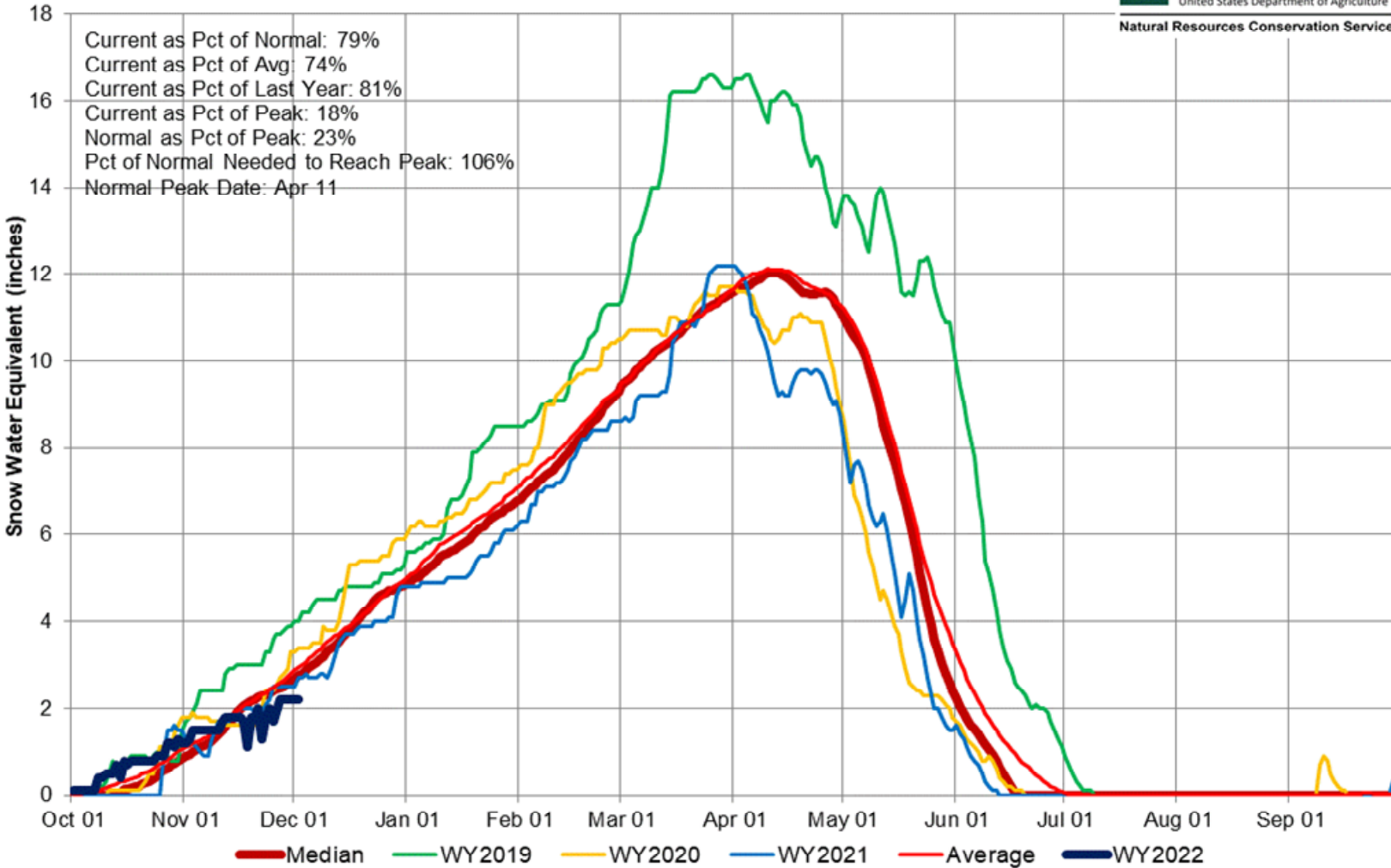
Based on Provisional SNOTEL data as of Dec 02, 2021



United States Department of Agriculture

Natural Resources Conservation Service

Current as Pct of Normal: 79%  
Current as Pct of Avg: 74%  
Current as Pct of Last Year: 81%  
Current as Pct of Peak: 18%  
Normal as Pct of Peak: 23%  
Pct of Normal Needed to Reach Peak: 106%  
Normal Peak Date: Apr 11

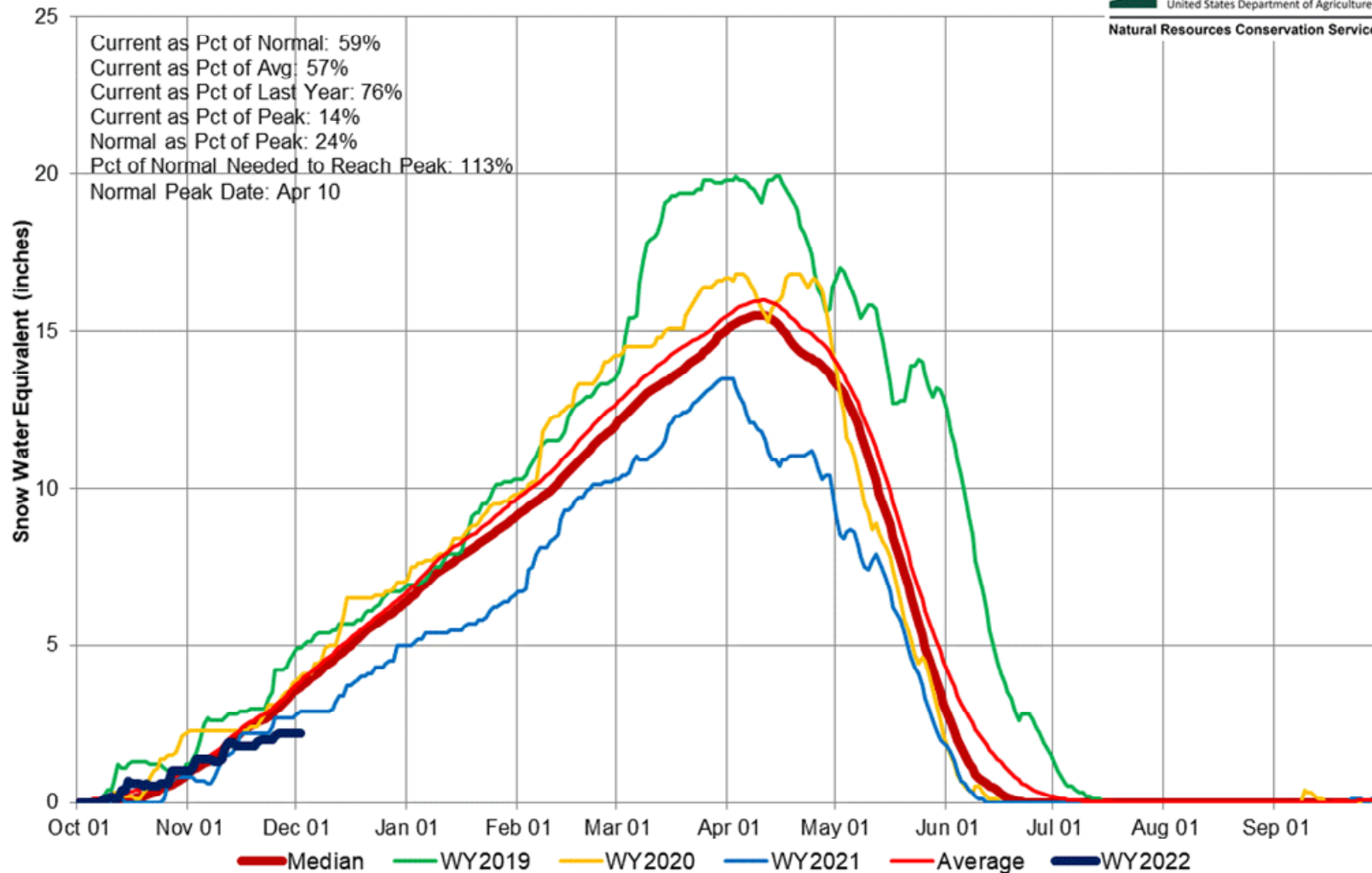


# Colorado River Basin Time Series Snowpack Summary

Based on Provisional SNOTEL data as of Dec 02, 2021

USDA  
United States Department of Agriculture

Natural Resources Conservation Service



# Winter Operations

- Currently releasing 15 cfs from Twin and 3 cfs from Turquoise to Pueblo.
- We anticipate moving a total of 25,000 AF from our upper reservoirs to Pueblo.
- Currently about 800 AF has been moved
- Movement of water will be adjusted according to the forecast and customers needs.



# Fryingpan-Arkansas ANS Update



- Since FY2018, Reclamation has competed for additional funding connected to the DOI Invasive Species Strategic Plan and Aquatic Nuisance Species Program for the protection of water and connected infrastructure.
- Eastern Colorado Area Office (ECAO) awarded Colorado Parks and Wildlife a total of \$400K to help with boat inspector labor at ECAO facilities in FY2019 and FY2021.
- Ruedi and Pueblo have received \$273K for on-the-ground improvements at inspection stations since FY2018.
- For FY2022, ECAO will be awarding \$150K in Inspection and Decontamination Station improvements at Twin and Turquoise. Pueblo will be receiving \$200K for Inspection Station improvements. Colorado Parks and Wildlife will be receiving another \$225K to help with boat inspector labor.





**Patrick Fischer**  
**Deputy Area Manager**  
**Bureau of Reclamation Eastern**  
**Colorado Area Office**

