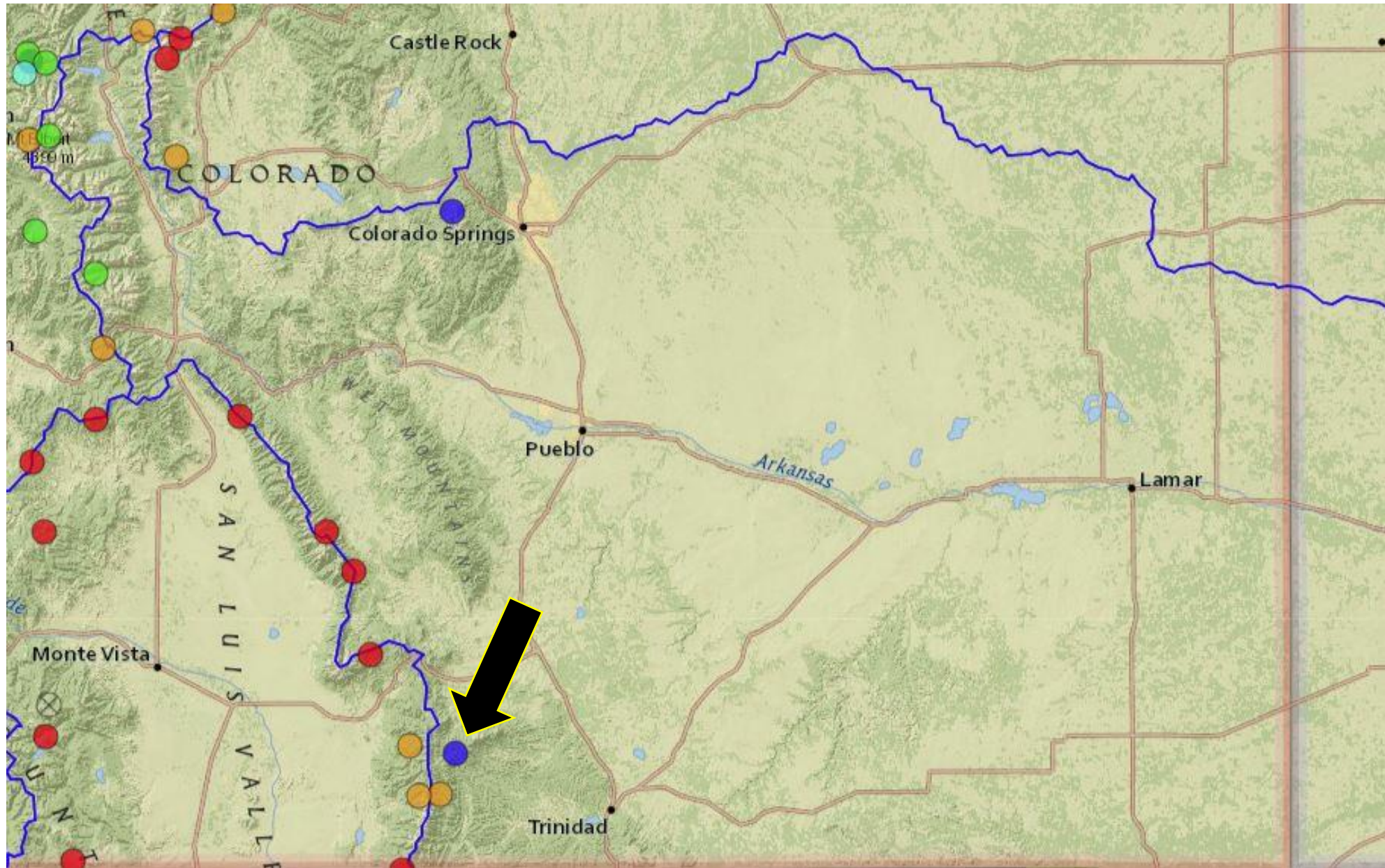
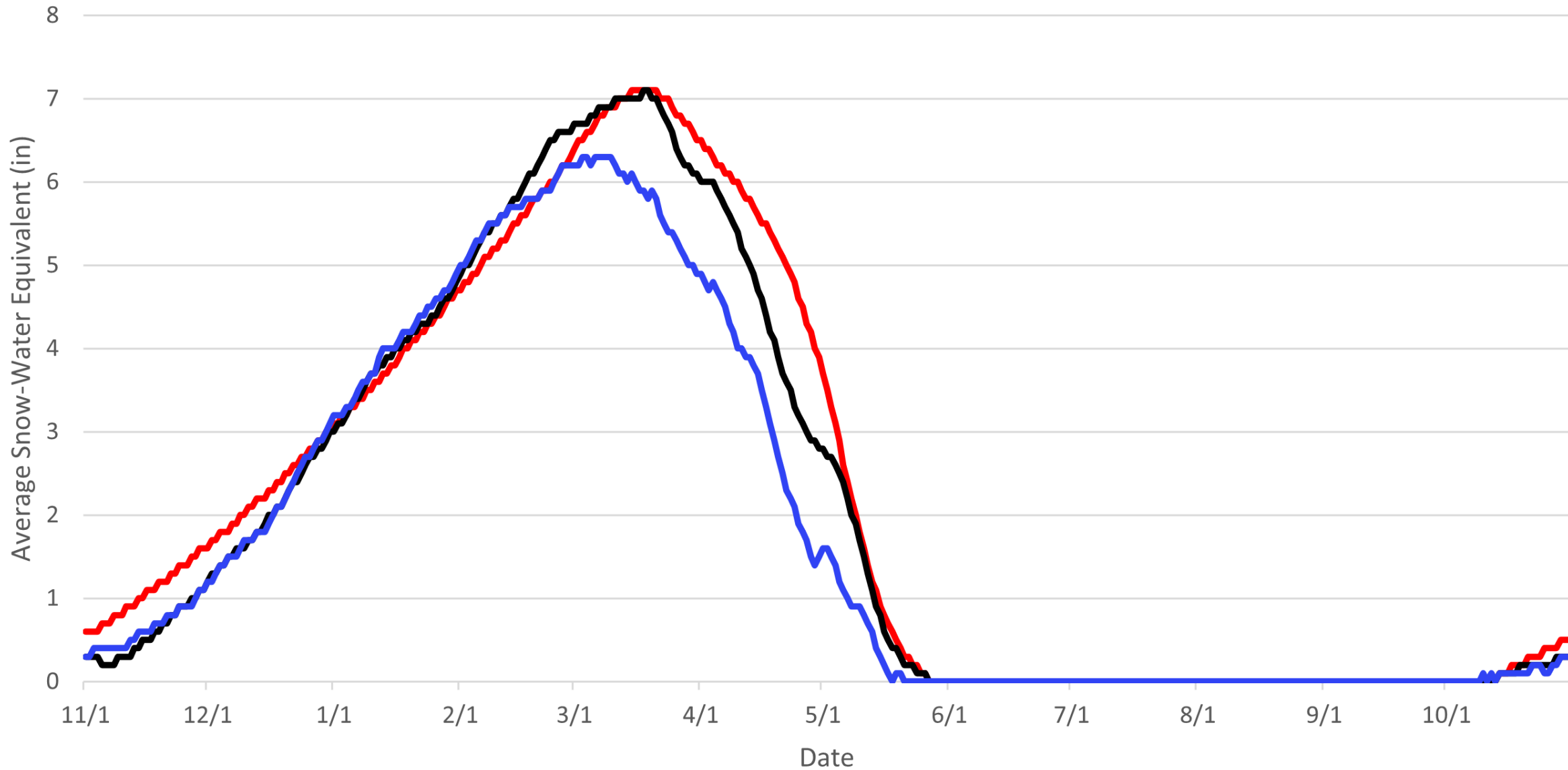


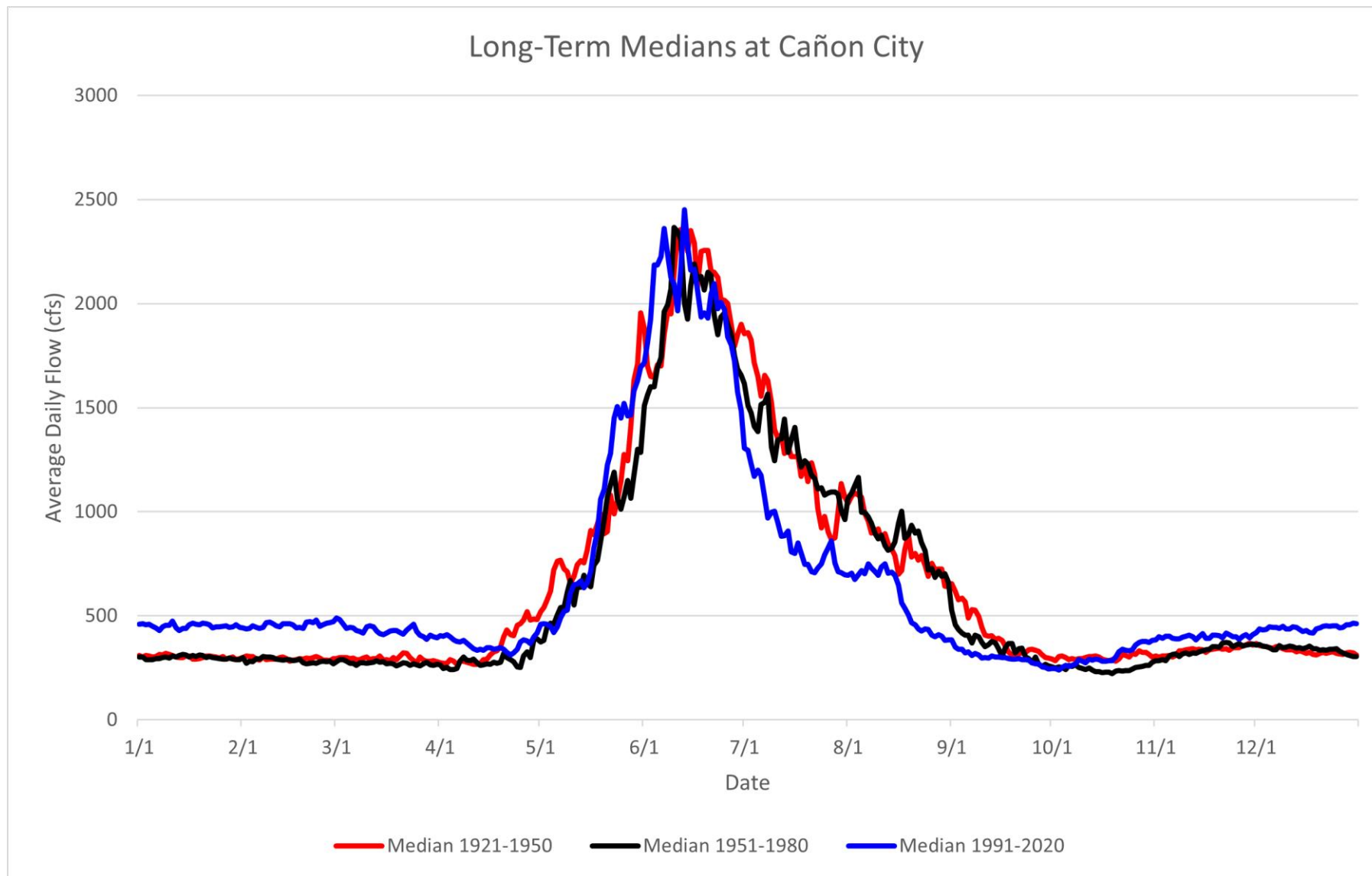
Location of the Apishapa SNOTEL Site



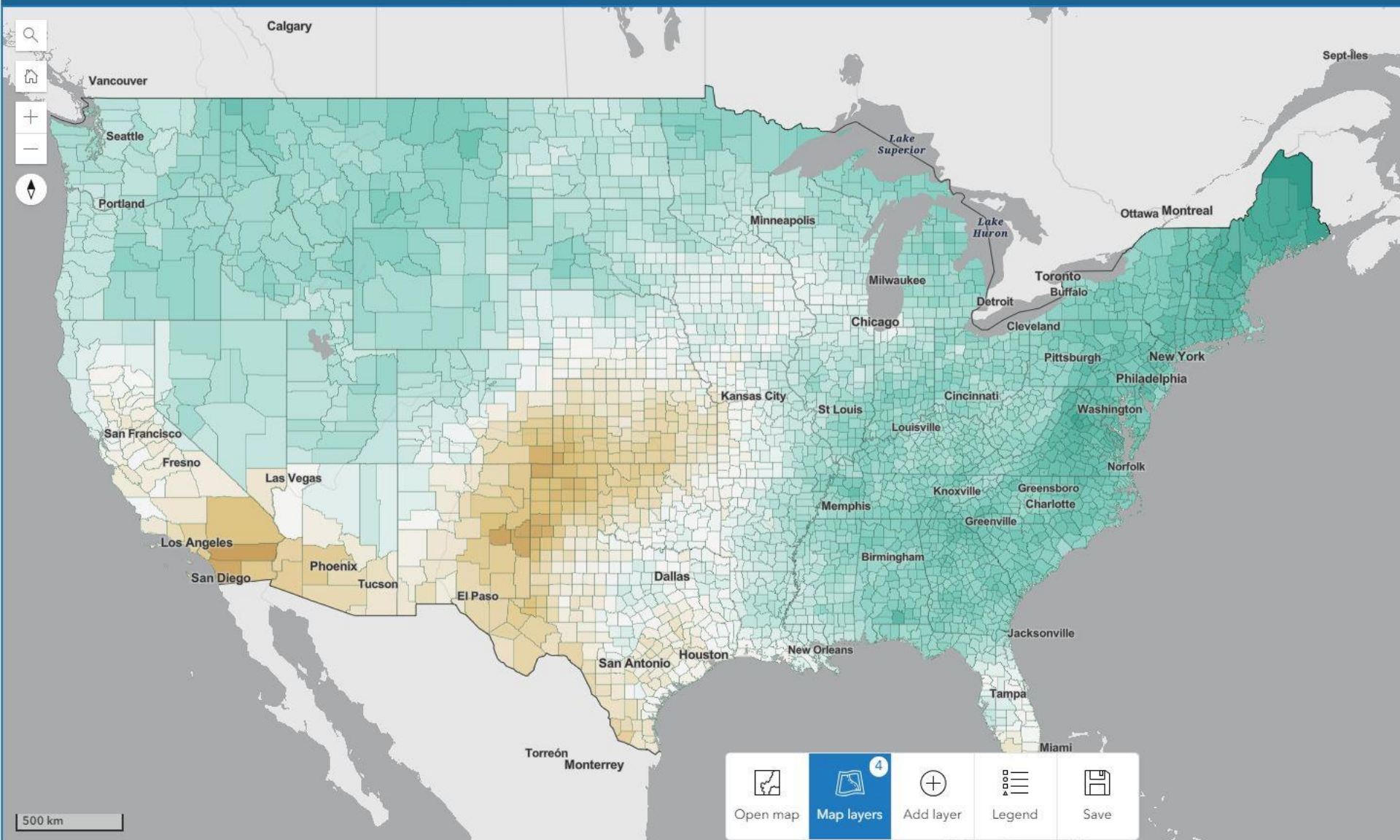
Snowpack Averages at the Apishapa SNOTEL Site



— Average 1971-2000 — Average 1981-2010 — Average 1991-2020



The USGS record at Cañon City goes back to 1888, and is continuous from 1896 to the present.



Map layers

- Global Warming Level 1.5 deg C
- Global Warming Level 2 deg C
- Global Warming Level 3 deg C

Change in Annual Precipitation (%)

> 10
0
< -10

500 km

Open map | Map layers 4 | Add layer | Legend | Save