



— BUREAU OF —
RECLAMATION

Arkansas River Compact Administration 2023 Bureau of Reclamation Update

Jeff Rieker
Area Manager
Eastern Colorado Area Office
Loveland, CO

Tim Miller
Hydrologist
Pueblo Field Office
Pueblo, CO

Fry-Ark Reservoirs as of November 30, 2023:

Ruedi Reservoir: 108% of average

Turquoise Lake: 86% of average

Twin Lakes: 109% of average

Pueblo Reservoir: 130% of average

- **221,674 AF stored in Pueblo**
- **51,177 AF of excess capacity water**
- **21,223 AF of winter water and winter carryover**
- **135,158 AF of Project water system wide**
- **110,215 AF of Project space in Pueblo**
- **39,695 AF of Project space in Twin & Turquoise**



Frying Pan-Arkansas Project

RECLAMATION

Managing Water in the West

2023/12/04

Turquoise
81,795 / 129,398 acft.
63% full on 2023/12/03

Ruedi
80,098 / 102,373 acft.
78% full on 2023/12/03

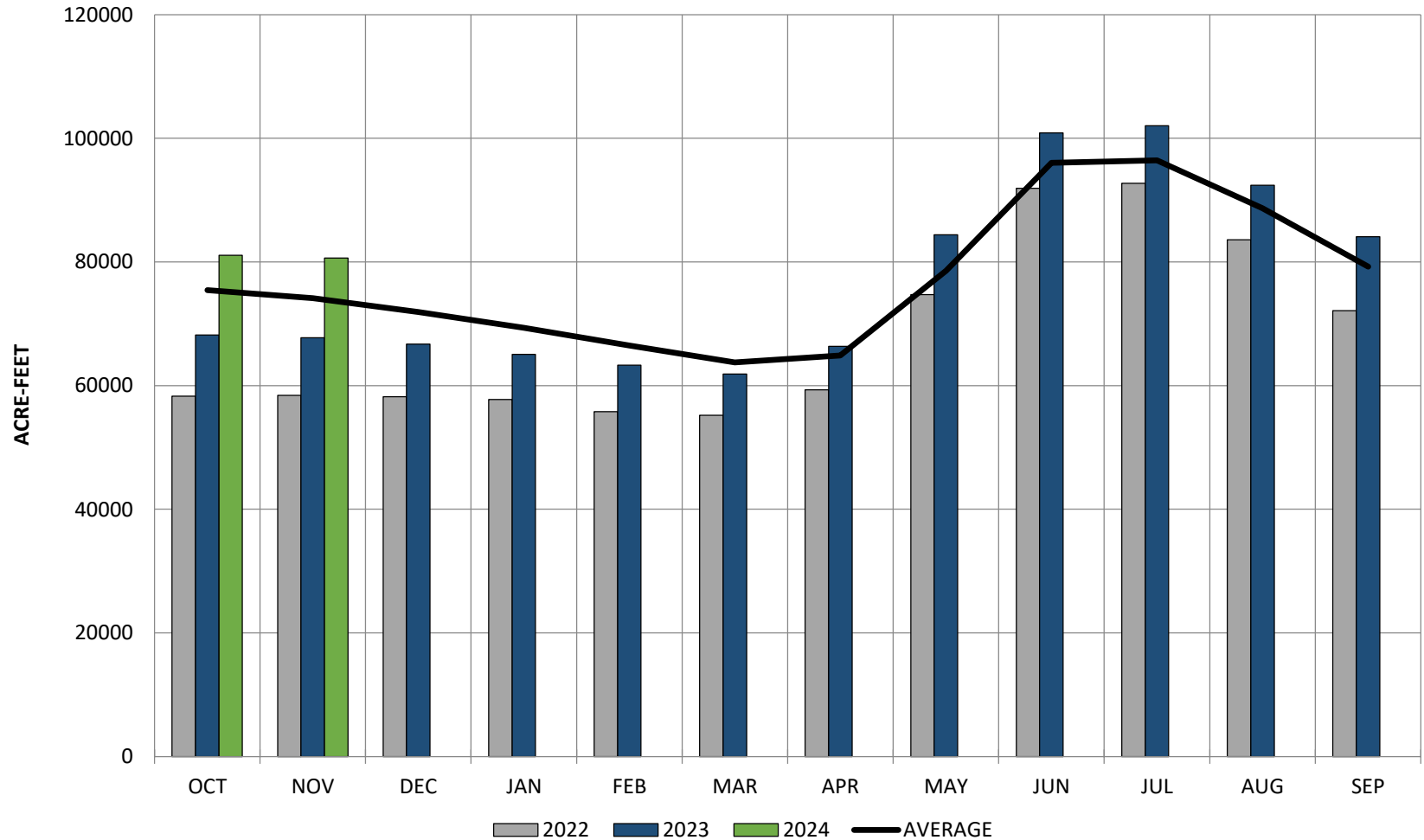
Mt. Elbert Forebay
6,892 / 11,143 acft.
62% full on 2023/12/03

Twin Lakes
120,656 / 141,000 acft.
86% full on 2023/12/03

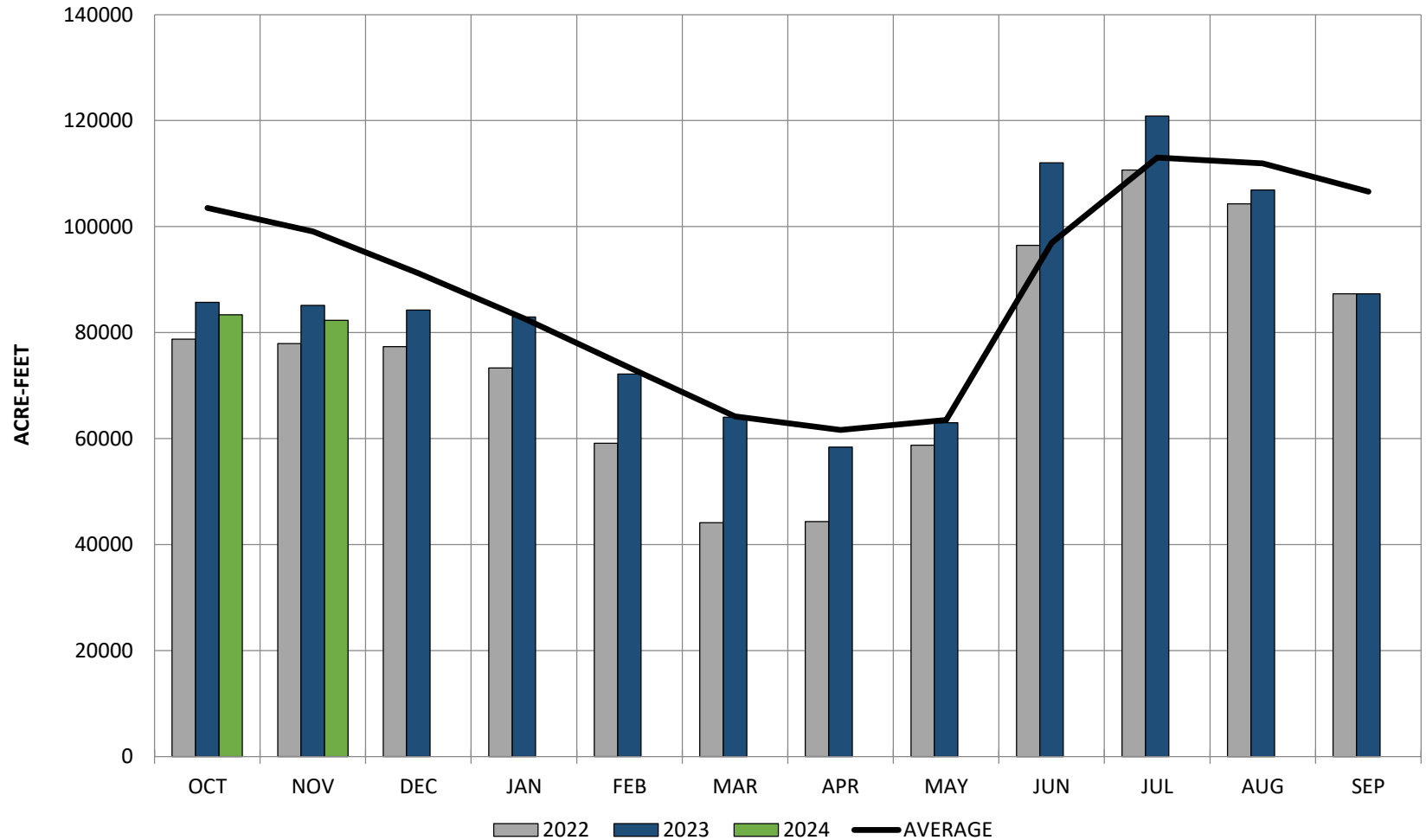
Pueblo
222,617 / 311,384 acft.
71% full on 2023/12/03

© 2017 ES&L, Inc. All rights reserved.

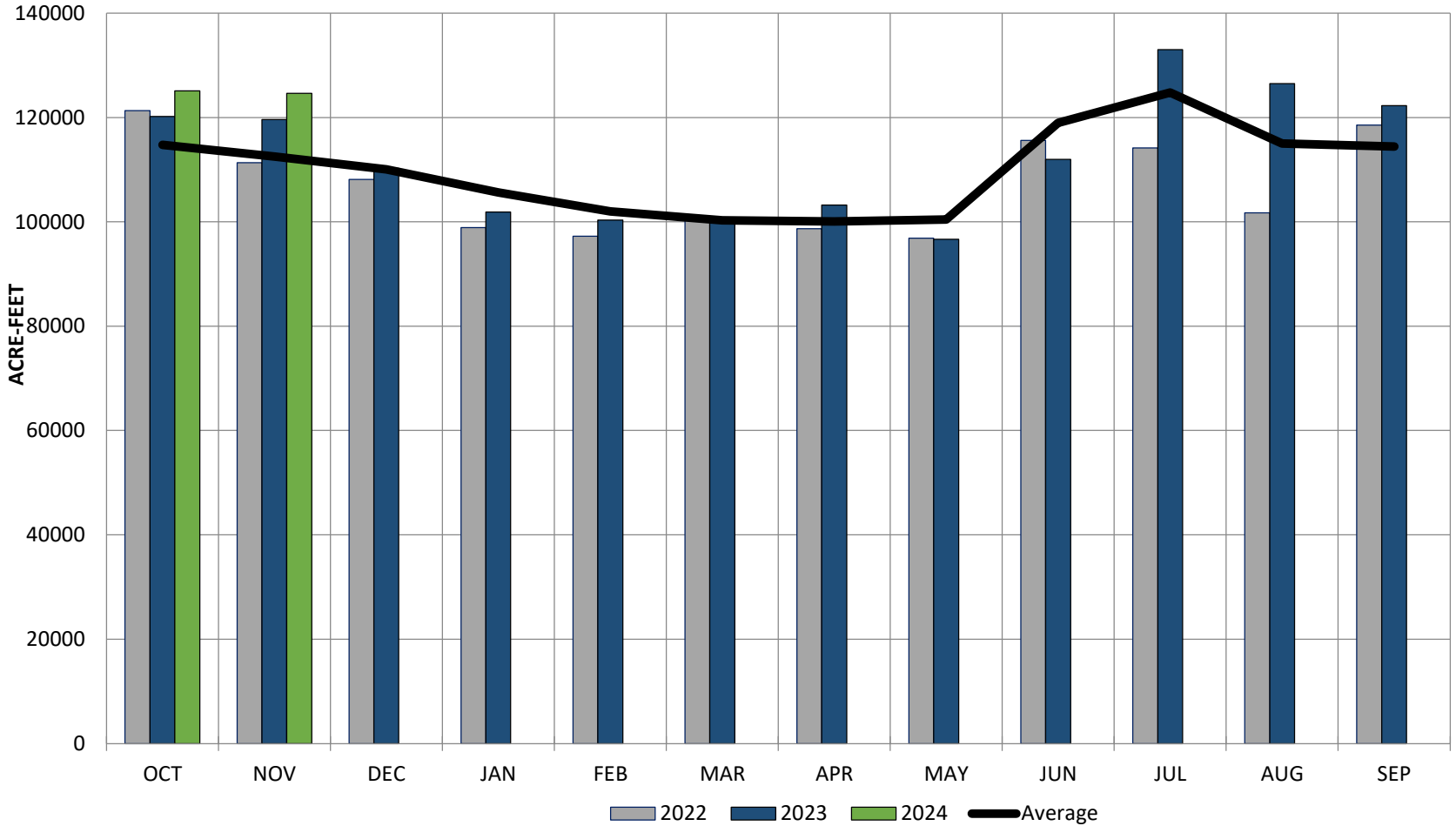
RUEDI RESERVOIR



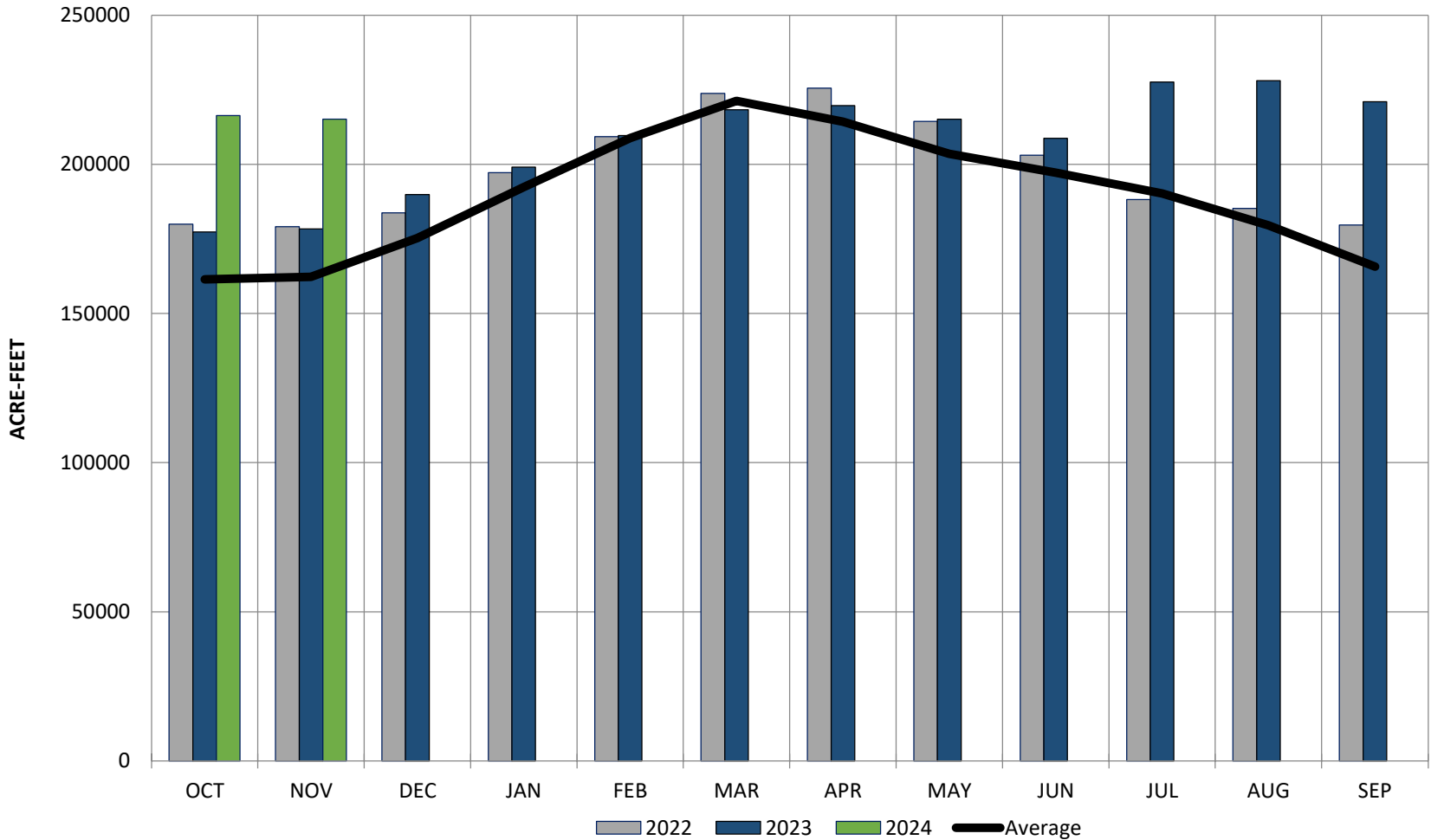
TURQUOISE LAKE

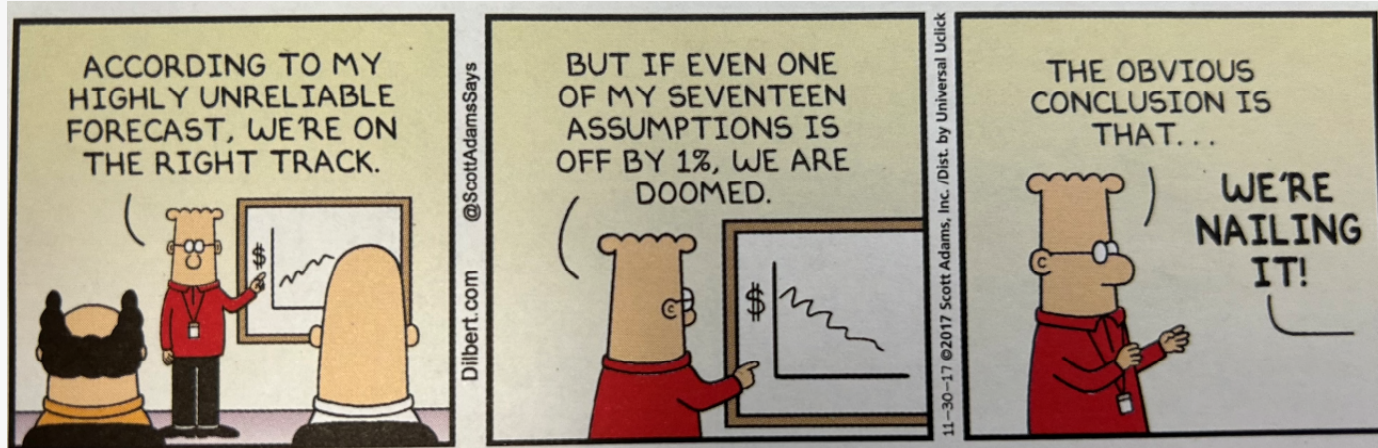


TWIN LAKES



PUEBLO RESERVOIR





2023 Preliminary

Forecasts:

February 1 - 59.9 KAF

March 1 - 56.2 KAF

April 1 - 57.2 KAF

May 1, 2023

Forecast:

30% - 50.0 KAF

50% - 55.4 KAF

70% - 60.8 KAF



2023 Fry-Ark Imports

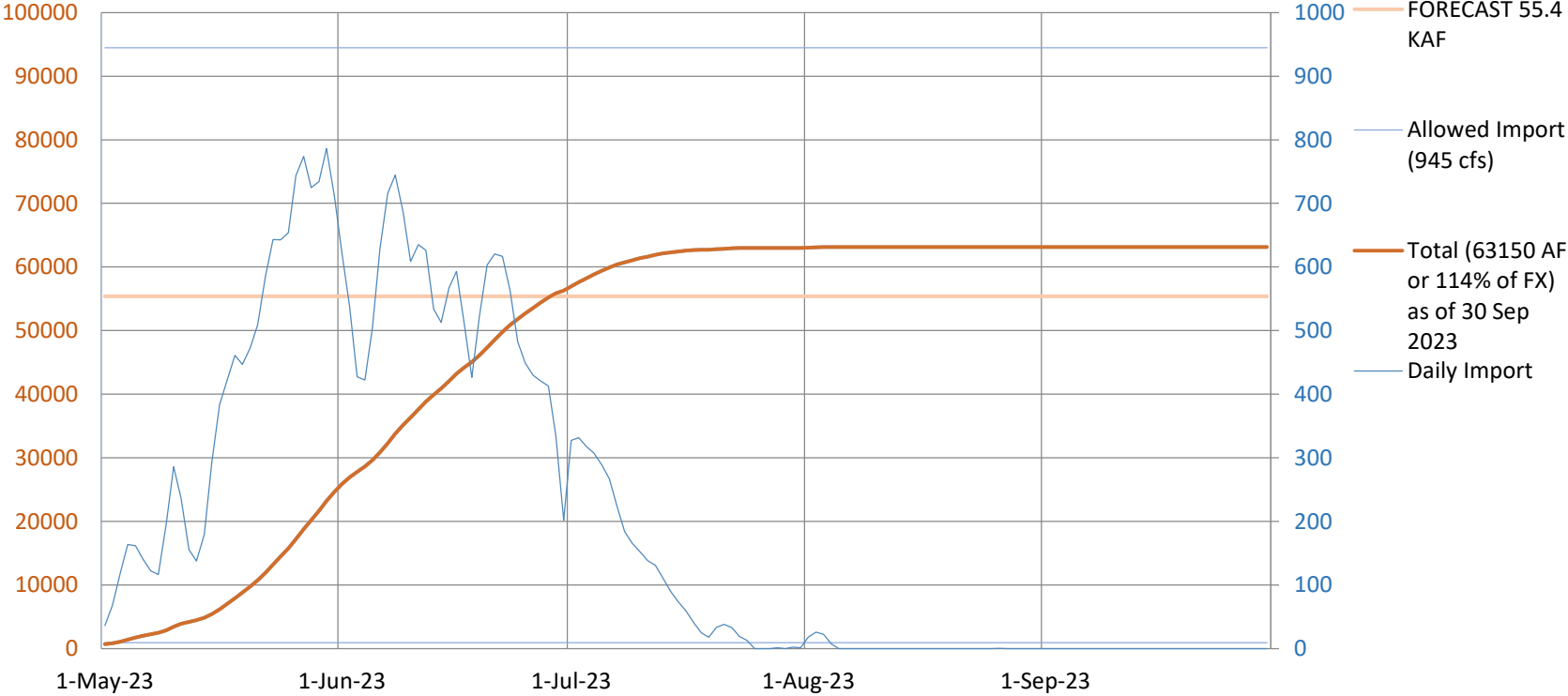
- Collection system opens each year around the 3rd week in April
- Imports peak during peak runoff, usually between mid-May and mid-June
- Usually done with imports around late July
- WY23 a total of 63,150 AF was imported through the Boustead Tunnel



Boustead Stored Cumulative Imports 2023

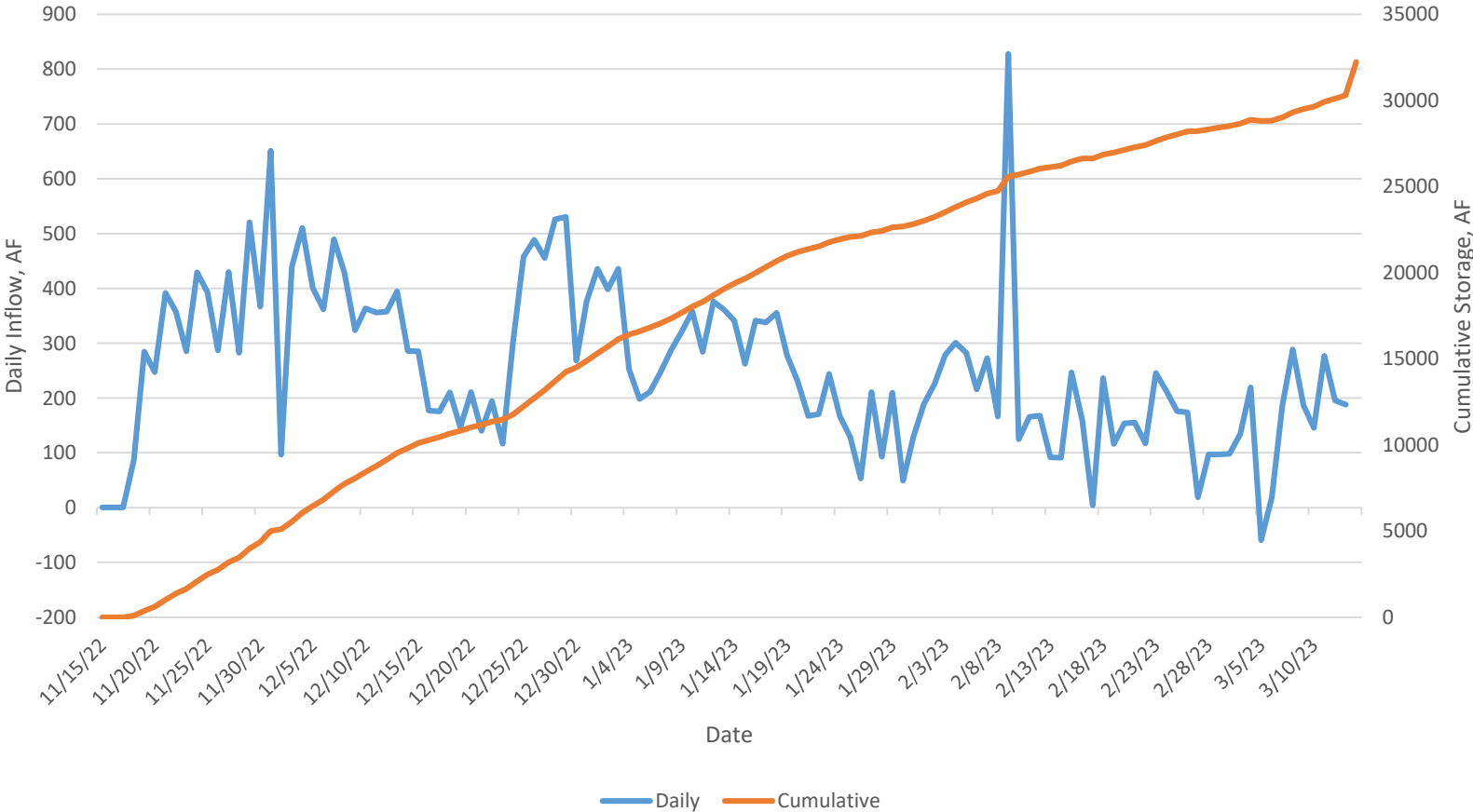
Cumulative Imports
Acre Feet

Daily Imports
CFS

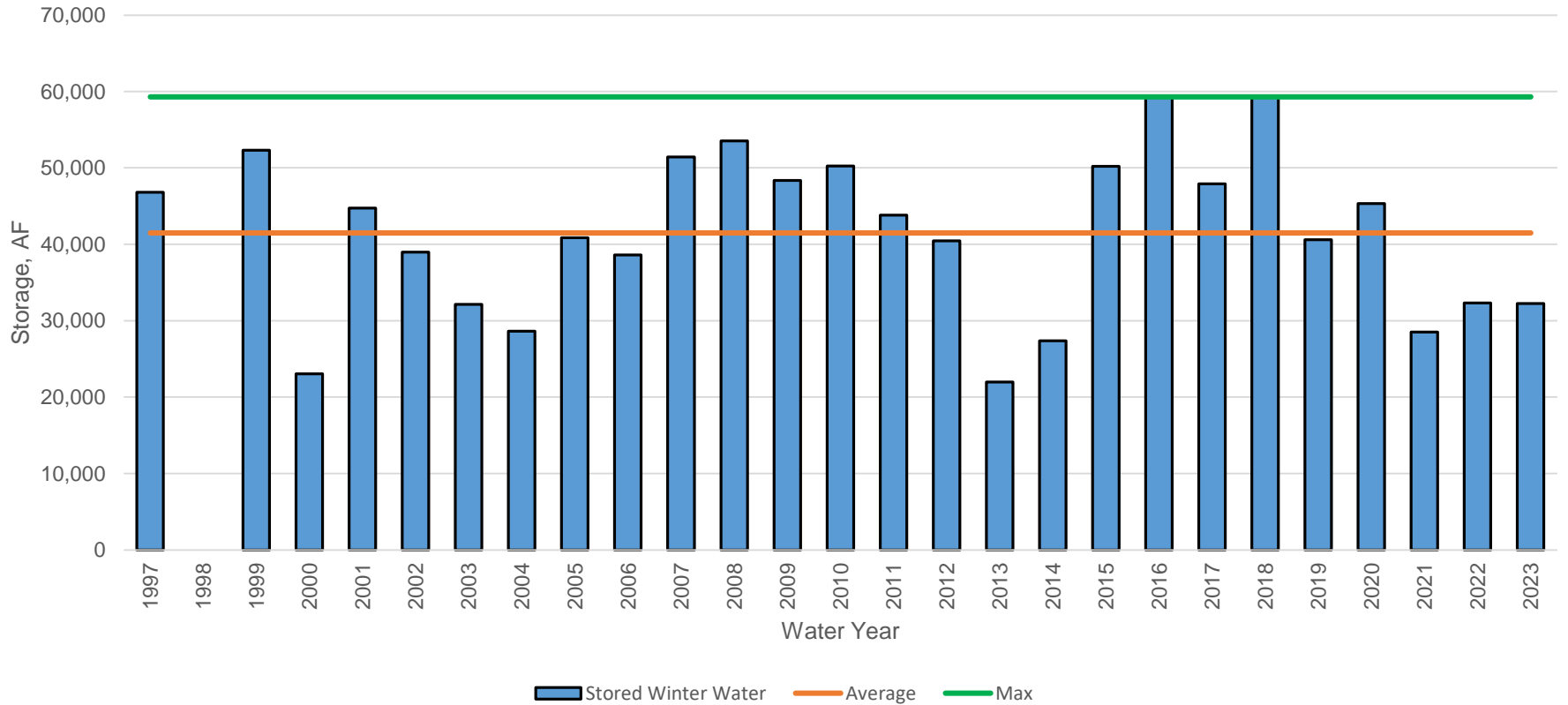


2023 Winter Water – 32,238 AF stored in Pueblo Reservoir

2023 Pueblo Reservoir Winter Water Storage



Winter Water Stored in Pueblo Reservoir by Water Year



Mt. Elbert Rehabilitation Project

- **Dual Unit Outage beginning December 4**
 - Cooling water piping
 - Switch gear upgrade
 - Shaft seals
- **Planned completion mid-February**
- **Effects on operations**
 - Mt. Elbert Conduit
 - Lake Fork Creek



Winter Operations

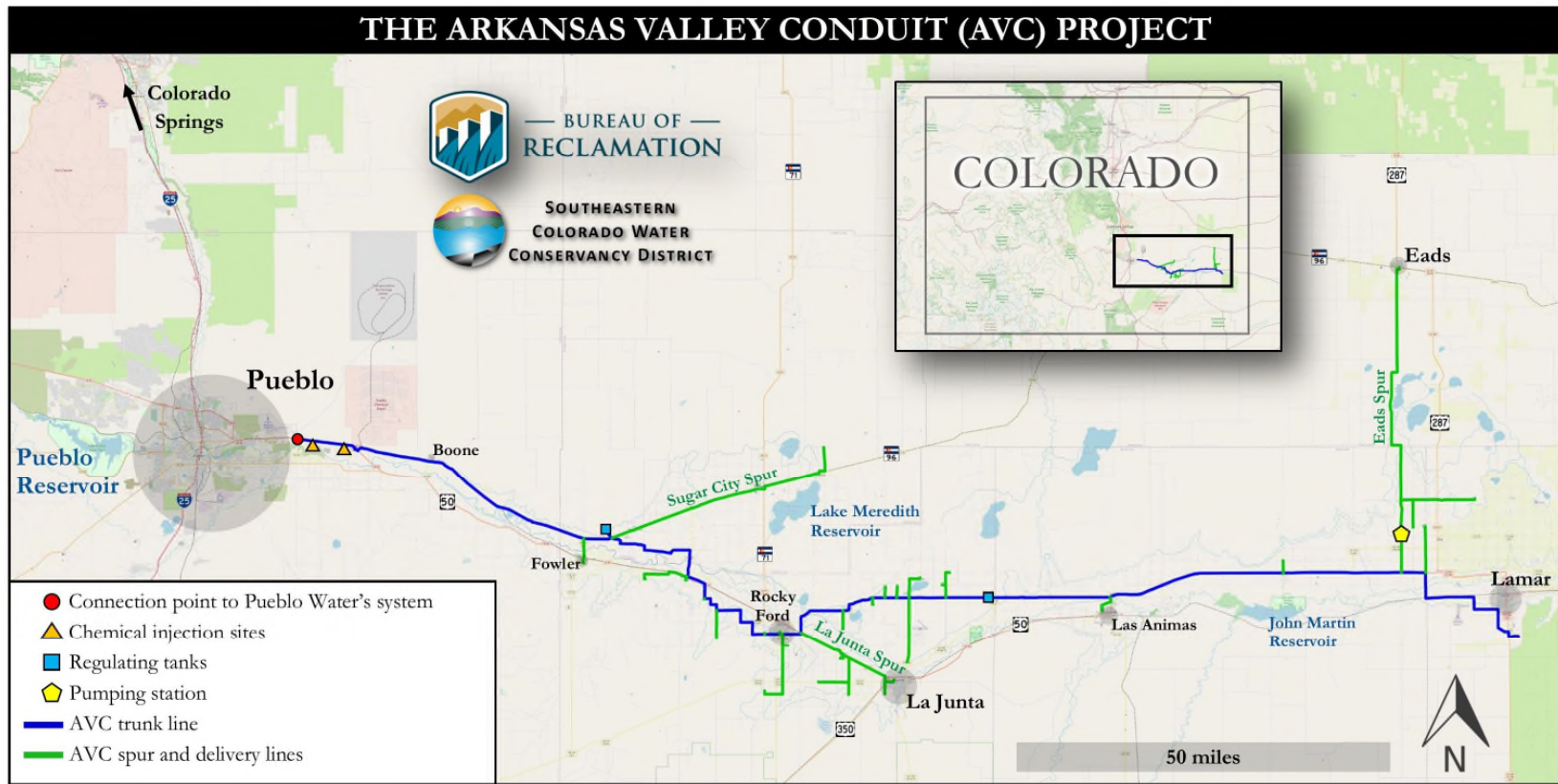
- Currently releasing 15 cfs from Twin Lakes and 3 cfs from Turquoise Lake
- 35 KAF was moved from upper reservoirs in anticipation of the Mt Elbert dual outage
- We have ~20 KAF remaining to move down from Turquoise to Pueblo
- ~5 to 10 KAF to move from Twin to Pueblo
- Plan to begin moving water in early February.
- Amount of water moved will be adjusted based on snowpack and customer needs



Arkansas Valley Conduit



• Summary of 2023 Milestones and 2024 Activities





— BUREAU OF —
RECLAMATION

