

Comments on OS Reports

Section III of 1980
Operating Plan
(highlighting added)

- B. An account for the Fort Lyon Canal is hereby granted in John Martin Reservoir for agricultural purposes only. The Fort Lyon Canal may deliver water into said account under an approved Pueblo winter water storage plan subject to the limitations that total quantity in the account at any time cannot exceed 20,000 acre-feet and that the delivery cannot include water that otherwise would have accumulated in Conservation Storage. The Fort Lyon may use water in this account for exchange with existing priorities. However, this account shall not be used in any manner to increase the permanent pool, either by exchange, transfer, change of use, or otherwise. In the event that water accumulated in this account has not been completely released by the end of the Compact Year, then that water shall become Conservation Storage controlled by Subsection II A.
- C. An account for the Las Animas Consolidated Canal Company is hereby granted in John Martin Reservoir for agricultural purposes only. The Las Animas Consolidated Canal Company may deliver water into said account under an approved Pueblo winter water storage plan subject to the limitations that total quantity in the account at any time cannot exceed 5,000 acre-feet and that the delivery cannot include water that otherwise would have accumulated in Conservation Storage. The Las Animas Consolidated may use water in this account for exchange with existing priorities. However, this account shall not be used in any manner to increase the permanent pool, either by exchange, transfer, change of use, or otherwise. In the event that water accumulated in this account has not been completely released by the end of the Compact Year, then that water shall become Conservation Storage controlled by Subsection II A.

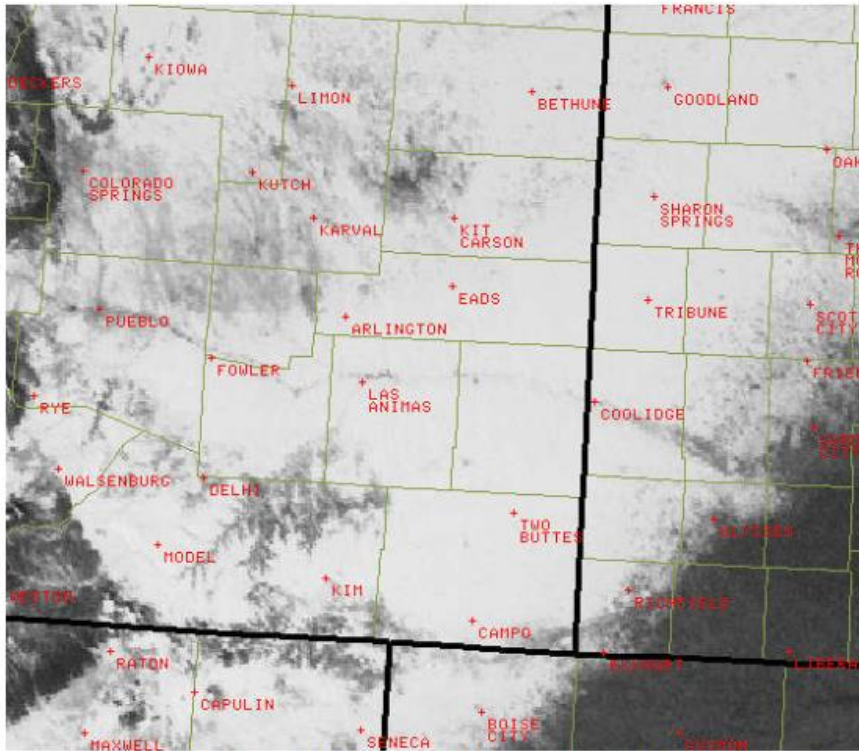


Figure 2. Visible Satellite Image – 16 January 2007 (forward of Jeff Hutton's email, 16 January 2007).

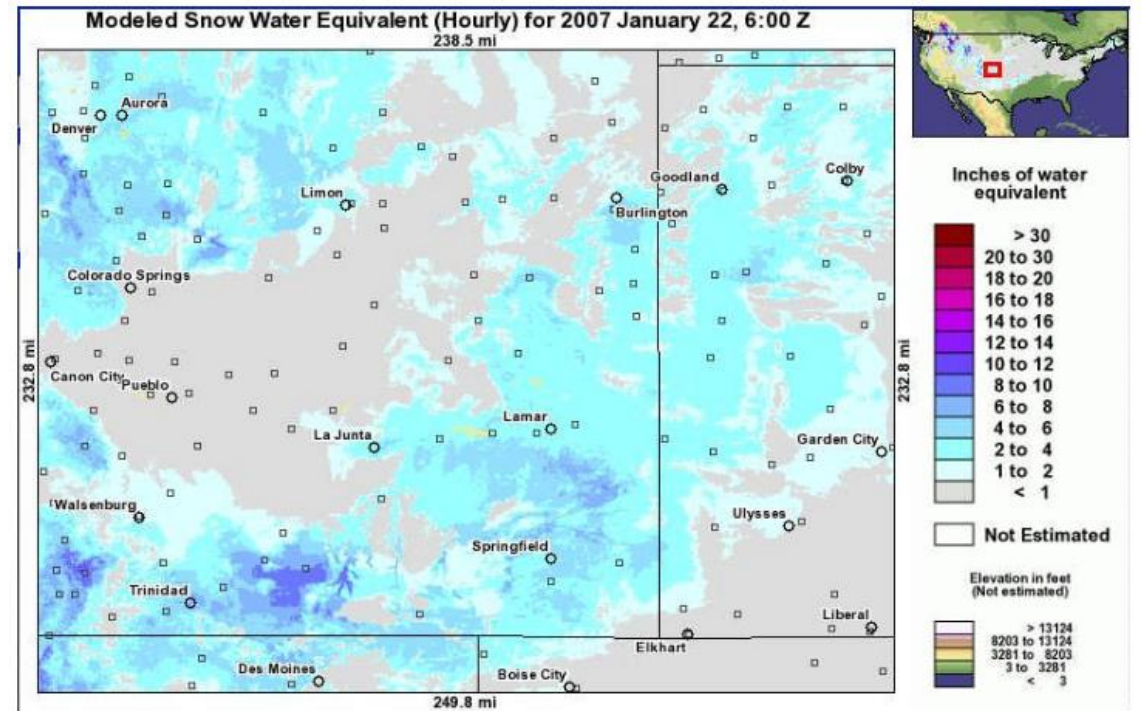


Figure 3. Modeled Snow Water Equivalent for 22 January 2007 from NOHRSC web site (www.nohrsc.noaa.gov).

Comments on OS Reports

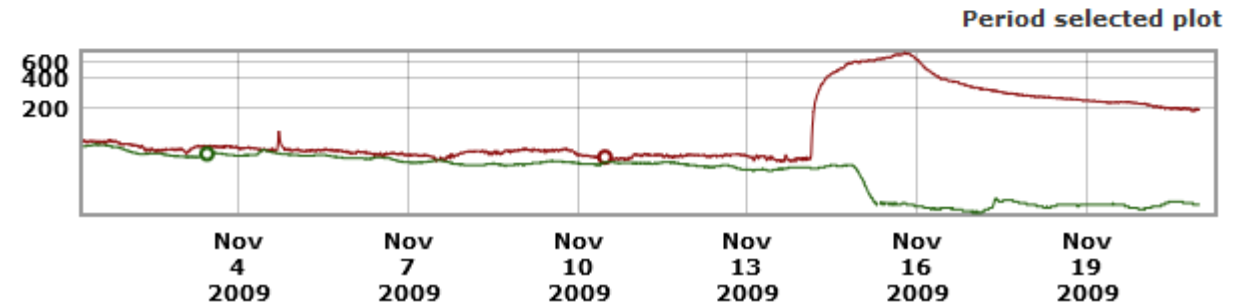
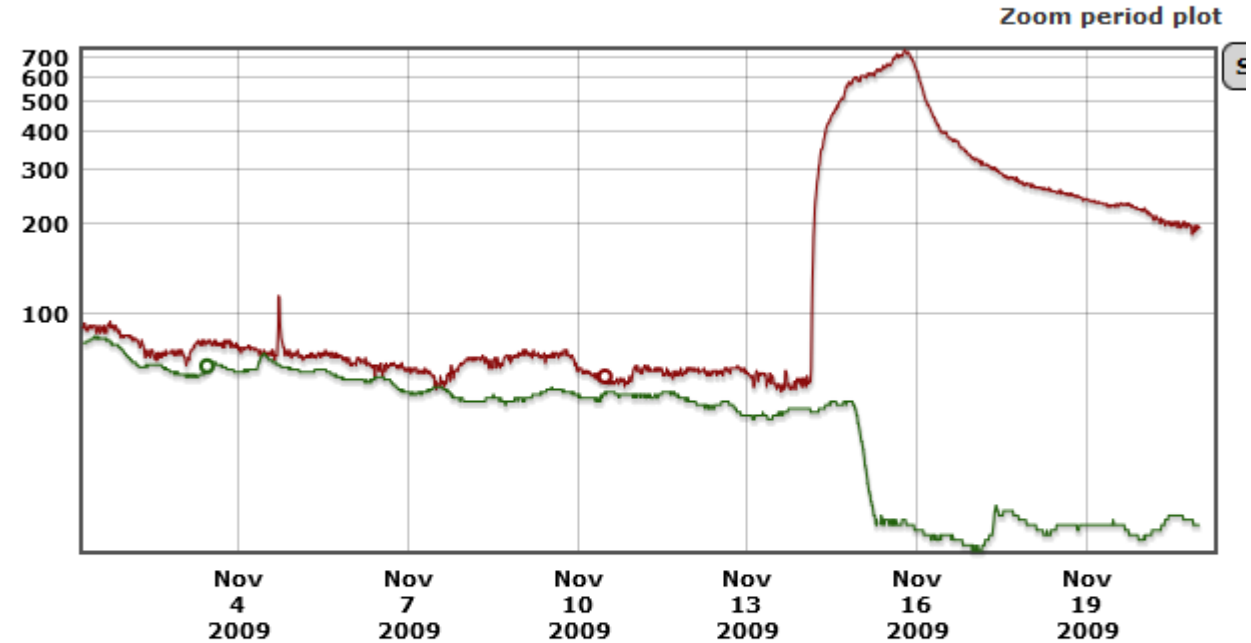
- Winter of 2006-2007 had significant snowfall
- Consolidated had a significant snowpack through a portion of the PWWSP period that would have impacted diversions during that time

Comments on OS Reports

- Consolidated bypassing Ark River at Las Animas
 - Recently resolved w/wasteway measurements



USGS 07124000 ARKANSAS RIVER AT LAS ANIMAS, CO.
USGS 07128500 PURGATOIRE RIVER NEAR LAS ANIMAS, CO



Comments on OS Reports

- Bifurcated
 1. Guidelines for split between Compact and PWWSP at Las Animas (mostly resolved with living document)
 2. Operational changes Pre-PWWSP v Post-PWWSP (unresolved)
- States have done separate analyses
 - Colorado looked at upstream v downstream diversions
 - Kansas looked at ditch operation changes
- Common dataset